

4

3

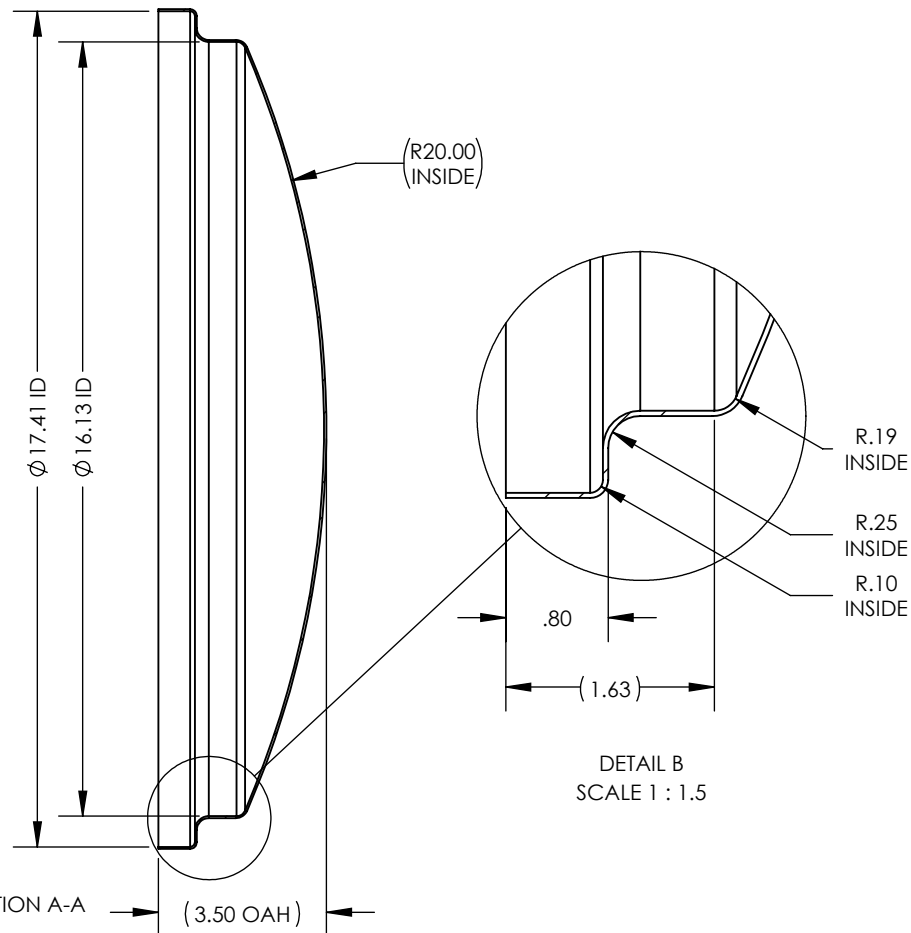
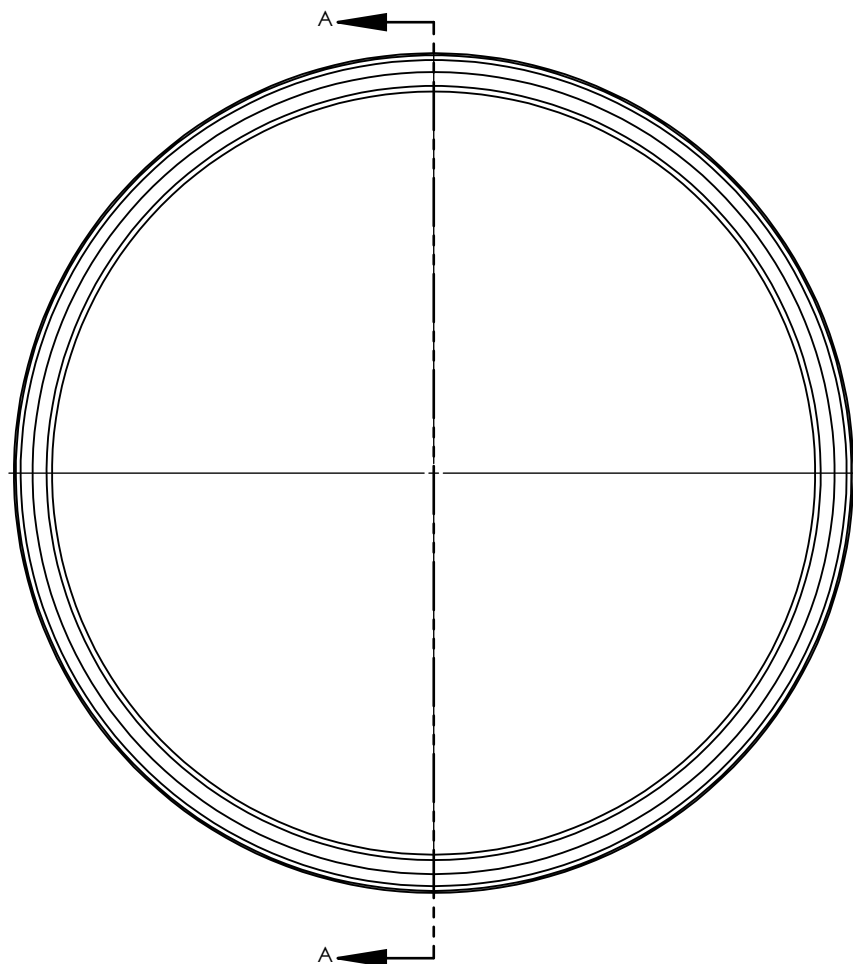
2

1

NOTES UNLESS OTHERWISE SPECIFIED

1. PARENT MATERIAL: 304 STAINLESS STEEL, 18 GAUGE (0.048" THICK)
2. PART IS SEAMLESS, FORMED FROM SHEET METAL WITHOUT WELDS.
3. FINISH: NO METAL FINISHING REQUIRED. THE FINAL FINISH SHALL BE THE RESULT OF THE PROCESSES USED TO FABRICATE THE SHAPE, RESULTING IN AN ESTIMATED SURFACE ROUGHNESS OF 80 Ra.
4. PART IS NOT DESIGNED FOR PRESSURE OR VACUUM APPLICATIONS.

REVISIONS			
REV.	DESCRIPTION	DATE	APPROVED
00	INITIAL RELEASE FOR MANUFACTURING	DEC2001	J.KNAPP
A	Changed Step Height from 0.75" to 0.80", changed 16.20" OD to 16.10" ID.	03DEC2010	L.FERNANDO
A1	Changed Step Height from 0.80" to 0.80" ref.	02AUG2012	D.JOHNSON
B	Updated sheet format, corrected title block and revision block author information, changed Step Height from 0.80" ref to 0.80", changed ID from 17.40" to 17.41", changed Dome Radius from 24.53" to 20.00" ref, changed ID from 16.10" to 16.13".	MAR2019	R.DAVIS
C	Added note about pressurized lids.	19OCT2023	C. FANKHAUSER



SCALE 1 : 8

UNLESS OTHERWISE SPECIFIED:

1. DO NOT SCALE DRAWING
2. DIMENSIONS ARE IN INCHES
3. TOLERANCE:
FRACTIONAL $\pm .25$
X.X $\pm .1$
X.XX $\pm .03$
X.XXX $\pm .010$
ANGULAR: ± 2 DEG.
4. INTERPRET DRAWING PER ASME-Y14.5M-1994 STANDARDS
5. THIRD ANGLE PROJECTION
6. REMOVE BURRS & BREAK ALL SHARP EDGES WITH R0.03 $\pm .02$

	NAME	DATE
DRAWN	R.DAVIS	MAR2019
CHECKED		
ENG APPR.		
MFG APPR.		
Q.A.		

PROPRIETARY AND CONFIDENTIAL

THE INFORMATION CONTAINED WITHIN THIS DRAWING IS THE SOLE PROPERTY OF TOLEDO METAL SPINNING COMPANY. ANY REPRODUCTION IN PART OR AS A WHOLE WITHOUT WRITTEN PERMISSION OF TOLEDO METAL SPINNING COMPANY IS PROHIBITED.

TITLE:

TMS 304SS DOMED LID

SIZE	DRAWING NUMBER	REV
A	TMSLD1618	C
SCALE: 1:4		WEIGHT: 4.13
SHEET 1 OF 1		