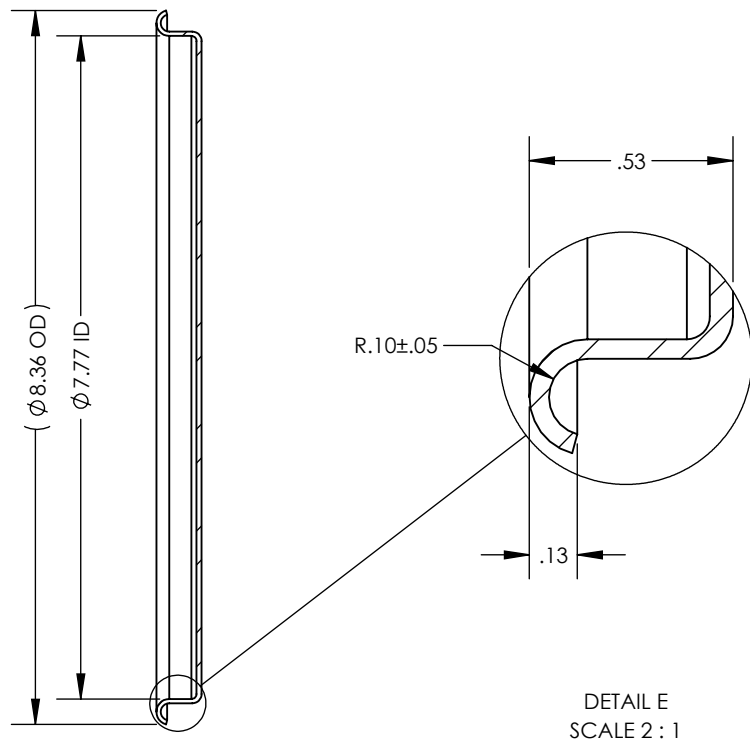


1

- | REVISIONS | | | |
|-----------|---|----------|---------------|
| REV. | DESCRIPTION | DATE | APPROVED |
| 00 | INITIAL RELEASE FOR MANUFACTURING | | |
| A | Updated sheet format, corrected title block and revision block author information, changed Radius from 0.155+/-0.035" to 0.10+/-0.05", changed OAH from 0.31" to 0.53". | MAR2019 | R.DAVIS |
| B | Added note referencing pressurized lids. | 3NOV2023 | C. FANKHAUSER |



DETAIL E
SCALE 2 : 1



	NAME	DATE
DRAWN	R.DAVIS	MAR2019
CHECKED		
ENG APPR.		
MFG APPR.		
Q.A.		

PROPRIETARY AND CONFIDENTIAL

THE INFORMATION CONTAINED WITHIN THIS DRAWING IS THE SOLE PROPERTY OF TOLEDO METAL SPINNING COMPANY. ANY REPRODUCTION IN PART OR AS A WHOLE WITHOUT WRITTEN PERMISSION OF TOLEDO METAL SPINNING COMPANY IS PROHIBITED.

TITLE: TMS 316SS BEADED LID			
SIZE A	DRAWING NUMBER TMSL616-316SS-BEADED		REV B
SCALE: 1:2.25		WEIGHT: 1.08	SHEET 1 OF 1