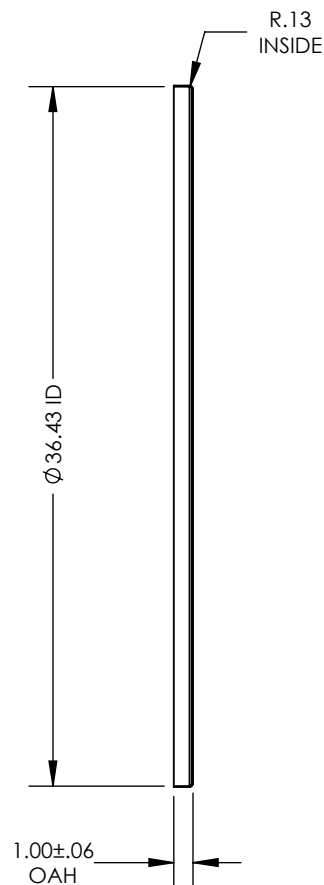
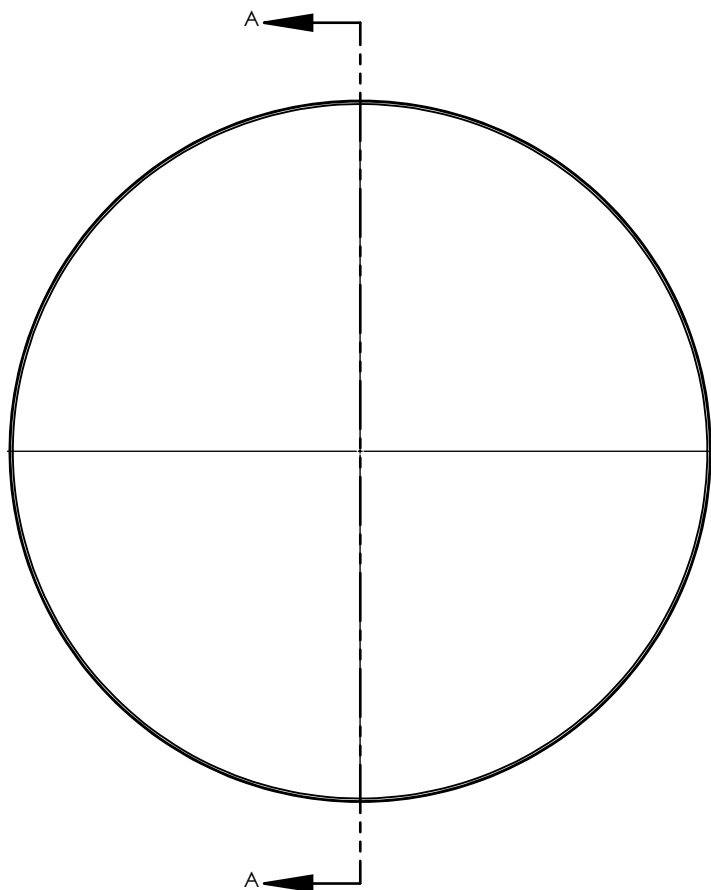


**NOTES UNLESS OTHERWISE SPECIFIED**

1. PARENT MATERIAL: 304 STAINLESS STEEL, 16 GAUGE (0.060" THICK)
2. PART IS SEAMLESS, FORMED FROM SHEET METAL WITHOUT WELDS.
3. FINISH: NO METAL FINISHING REQUIRED. THE FINAL FINISH SHALL BE THE RESULT OF THE PROCESSES USED TO FABRICATE THE SHAPE, RESULTING IN AN ESTIMATED SURFACE ROUGHNESS OF 80 Ra.
4. FITS TMS36111 HOPPER **WITHOUT FLANGE**.
5. PART IS NOT DESIGNED FOR PRESSURE OR VACUUM APPLICATIONS.

- NOTES UNLESS OTHERWISE SPECIFIED**
1. PARENT MATERIAL: 304 STAINLESS STEEL, 16 GAUGE (0.060" THICK)
  2. PART IS SEAMLESS, FORMED FROM SHEET METAL WITHOUT WELDS.
  3. FINISH: NO METAL FINISHING REQUIRED. THE FINAL FINISH SHALL BE THE RESULT OF THE PROCESSES USED TO FABRICATE THE SHAPE, RESULTING IN AN ESTIMATED SURFACE ROUGHNESS OF 80 Ra.
  4. FITS TMS36111 HOPPER **WITHOUT FLANGE**.
  5. PART IS NOT DESIGNED FOR PRESSURE OR VACUUM APPLICATIONS.

REVISIONS			
REV.	DESCRIPTION	DATE	APPROVED
00	INITIAL RELEASE FOR MANUFACTURING	10APR2013	L.FERNANDO
A	Updated sheet format, corrected title block and revision block author information, changed Radius from 0.25" to 0.13", changed OAH tolerance to 1.00" +/- 0.06".	MAR2019	R.DAVIS
B	Added note referencing pressurized lids.	3NOV2023	C. FANKHAUSER



SECTION A-A



SCALE 1 : 16

UNLESS OTHERWISE SPECIFIED: 1. DO NOT SCALE DRAWING 2. DIMENSIONS ARE IN INCHES 3. TOLERANCE: FRACTIONAL ± .25 X.X     ±.1 X.XX    ±.03 X.XXX   ±.010 ANGULAR: ±2 DEG. 4. INTERPRET DRAWING PER ASME-Y14.5M-1994 STANDARDS 5. THIRD ANGLE PROJECTION 6. REMOVE BURRS & BREAK ALL SHARP EDGES WITH R0.03 ±.02		NAME	DATE	TITLE:  TMS 304SS LID		
	DRAWN	R.DAVIS	MAR2019			
	CHECKED					
	ENG APPR.			SIZE A  DRAWING NUMBER TMSL3616  REV B		
	MFG APPR.					
	Q.A.					
	PROPRIETARY AND CONFIDENTIAL					
	THE INFORMATION CONTAINED WITHIN THIS DRAWING IS THE SOLE PROPERTY OF TOLEDO METAL SPINNING COMPANY. ANY REPRODUCTION IN PART OR AS A WHOLE WITHOUT WRITTEN PERMISSION OF TOLEDO METAL SPINNING COMPANY IS PROHIBITED.					
				SCALE: 1:10	WEIGHT: 19.65	SHEET 1 OF 1