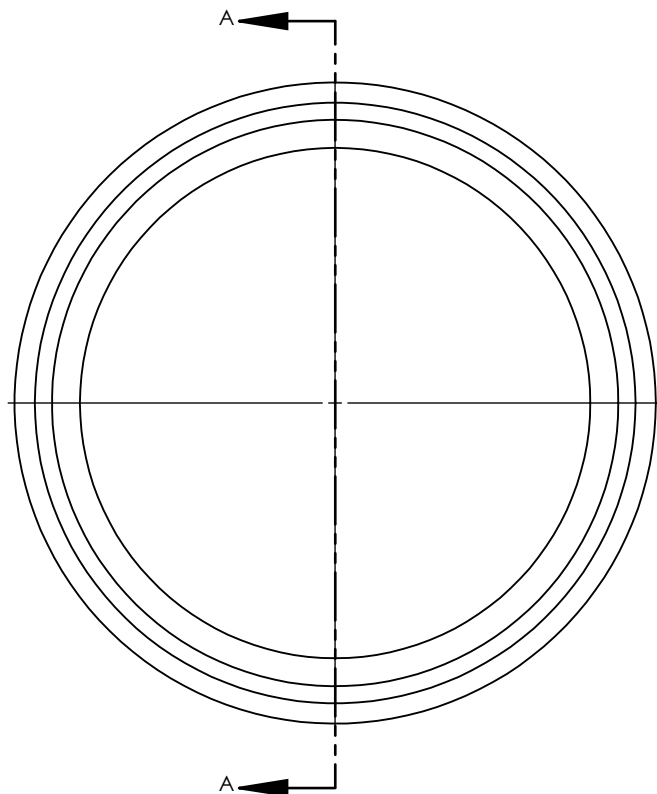


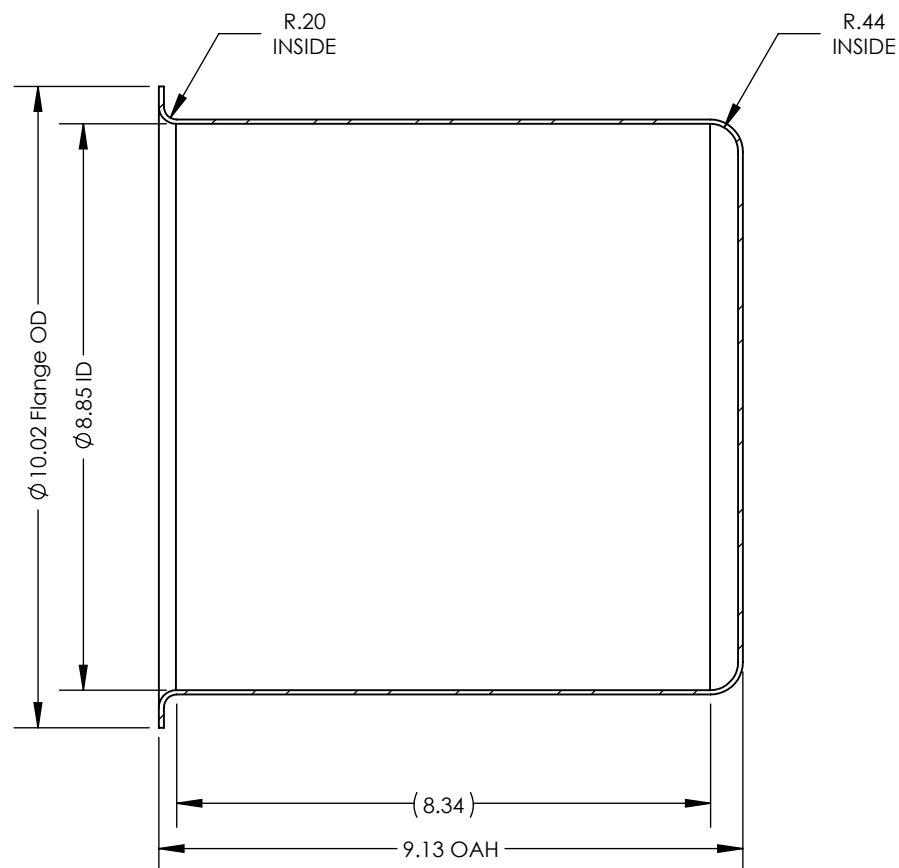
NOTES UNLESS OTHERWISE SPECIFIED

1. PARENT MATERIAL: 304 STAINLESS STEEL, 14 GAUGE (0.075" THICK)
2. PART IS SEAMLESS, FORMED FROM SHEET METAL WITHOUT WELDS.
3. STRAIGHT WALL THICKNESS IS +/-15% OF PARENT MATERIAL.
4. FINISH: NO METAL FINISHING REQUIRED. THE FINAL FINISH SHALL BE THE RESULT OF THE PROCESSES USED TO FABRICATE THE SHAPE, RESULTING IN AN ESTIMATED SURFACE ROUGHNESS OF 80 Ra.
5. ESTIMATED INTERNAL VOLUME: 2.33 GALLONS. (539.13 INCH³).



SCALE 1 : 6

REVISIONS			
REV.	DESCRIPTION	DATE	APPROVED
00	INITIAL RELEASE FOR MANUFACTURING	DEC2001	J.KNAPP
A	Updated sheet format, corrected title block and revision block author information, changed Overall Height from 9.44" to 9.13", changed Flange Radius from 0.24" to 0.20", changed Bottom Radius from 0.38" to 0.44", added Straight Wall ref dimension.	MAR2019	R.DAVIS



SECTION A-A

UNLESS OTHERWISE SPECIFIED:
1. DO NOT SCALE DRAWING
2. DIMENSIONS ARE IN INCHES
3. TOLERANCE:
 FRACTIONAL $\pm .25$
 X.X $\pm .1$
 X.XX $\pm .03$
 X.XXX $\pm .010$
 ANGULAR: ± 2 DEG.
4. INTERPRET DRAWING PER
 ASME-Y14.5M-1994 STANDARDS
5. THIRD ANGLE PROJECTION
6. REMOVE BURRS & BREAK ALL
 SHARP EDGES WITH $R0.03 \pm .02$

	NAME	DATE
DRAWN	R.DAVIS	MAR2019
CHECKED		
ENG APPR.		
MFG APPR.		
Q.A.		

PROPRIETARY AND CONFIDENTIAL
THE INFORMATION CONTAINED WITHIN THIS
DRAWING IS THE SOLE PROPERTY OF
TOLEDO METAL SPINNING COMPANY. ANY
REPRODUCTION IN PART OR AS A WHOLE
WITHOUT WRITTEN PERMISSION OF TOLEDO
METAL SPINNING COMPANY IS PROHIBITED.

TITLE:	
--------	--

9" CUP WITH 9" OVERALL HEIGHT

SIZE A	DRAWING NUMBER TMSCUP9914 REV A		REV A
SCALE: 1:3		WEIGHT: 6.51	SHEET 1 OF 1