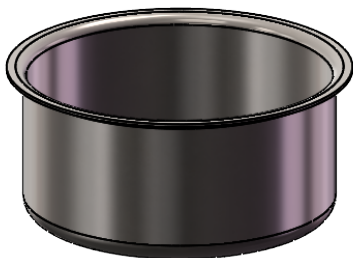
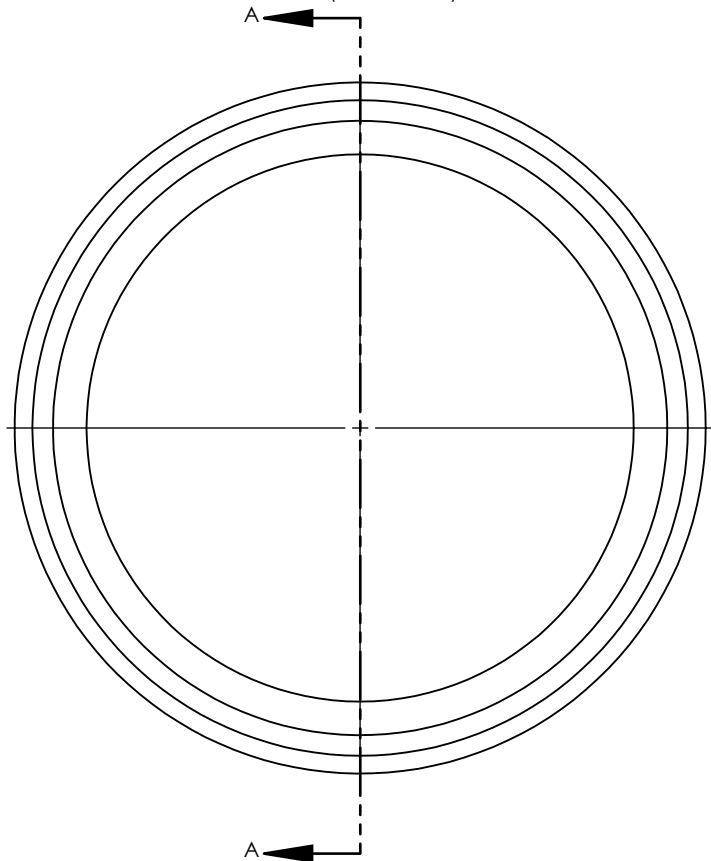


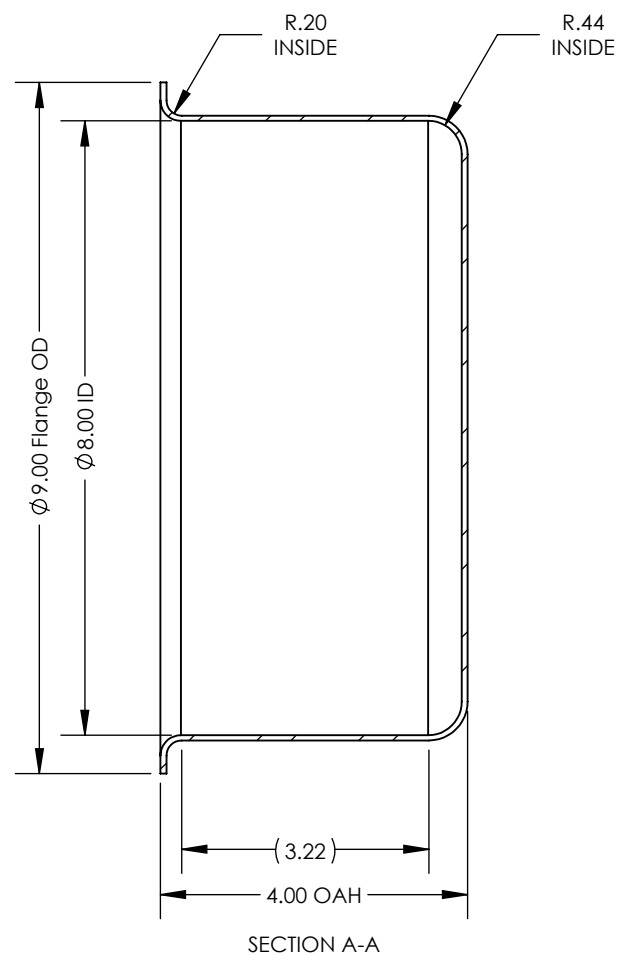
NOTES UNLESS OTHERWISE SPECIFIED

1. PARENT MATERIAL: 316 STAINLESS STEEL, 14 GAUGE (0.075" THICK)
2. PART IS SEAMLESS, FORMED FROM SHEET METAL WITHOUT WELDS.
3. STRAIGHT WALL THICKNESS IS +/-15% OF PARENT MATERIAL.
4. FINISH: NO METAL FINISHING REQUIRED. THE FINAL FINISH SHALL BE THE RESULT OF THE PROCESSES USED TO FABRICATE THE SHAPE, RESULTING IN AN ESTIMATED SURFACE ROUGHNESS OF 80 Ra.
5. ESTIMATED INTERNAL VOLUME: 0.79 GALLONS. (182.84 INCH³).



SCALE 1 : 5

REVISIONS			
REV.	DESCRIPTION	DATE	APPROVED
A	INITIAL RELEASE FOR MANUFACTURING	MAR2019	R.DAVIS



UNLESS OTHERWISE SPECIFIED:

1. DO NOT SCALE DRAWING
2. DIMENSIONS ARE IN INCHES
3. TOLERANCE:
FRACTIONAL $\pm .25$
X.X $\pm .1$
X.XX $\pm .03$
X.XXX $\pm .010$
ANGULAR: ± 2 DEG.
4. INTERPRET DRAWING PER
ASME-Y14.5M-1994 STANDARDS
5. THIRD ANGLE PROJECTION
6. REMOVE BURRS & BREAK ALL
SHARP EDGES WITH R0.03 ± 0.02

	NAME	DATE	TITLE: 8" CUP WITH 4" OVERALL HEIGHT			
DRAWN	R.DAVIS	MAR2019				
CHECKED						
ENG APPR.						
MFG APPR.						
Q.A.			SIZE A DRAWING NUMBER TMSCUP8414-316SS REV A REV A			
<u>PROPRIETARY AND CONFIDENTIAL</u>						
THE INFORMATION CONTAINED WITHIN THIS						
DRAWING IS THE SOLE PROPERTY OF						
TOLEDO METAL SPINNING COMPANY. ANY						
REPRODUCTION IN PART OR AS A WHOLE			SCALE: 1:2.5		WEIGHT: 3.18	SHEET 1 OF 1
WITHOUT WRITTEN PERMISSION OF TOLEDO						
METAL SPINNING COMPANY IS PROHIBITED.						