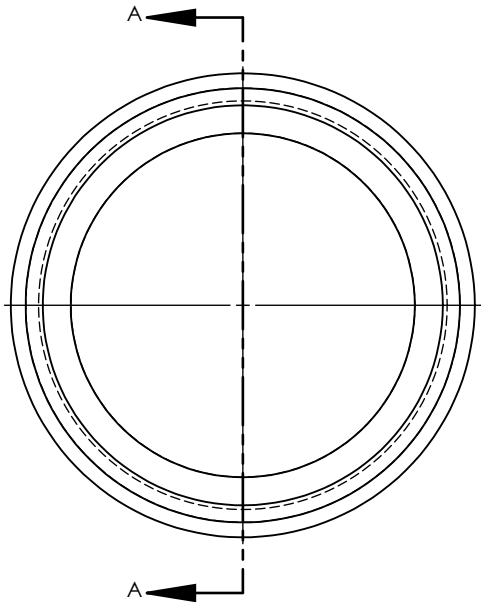
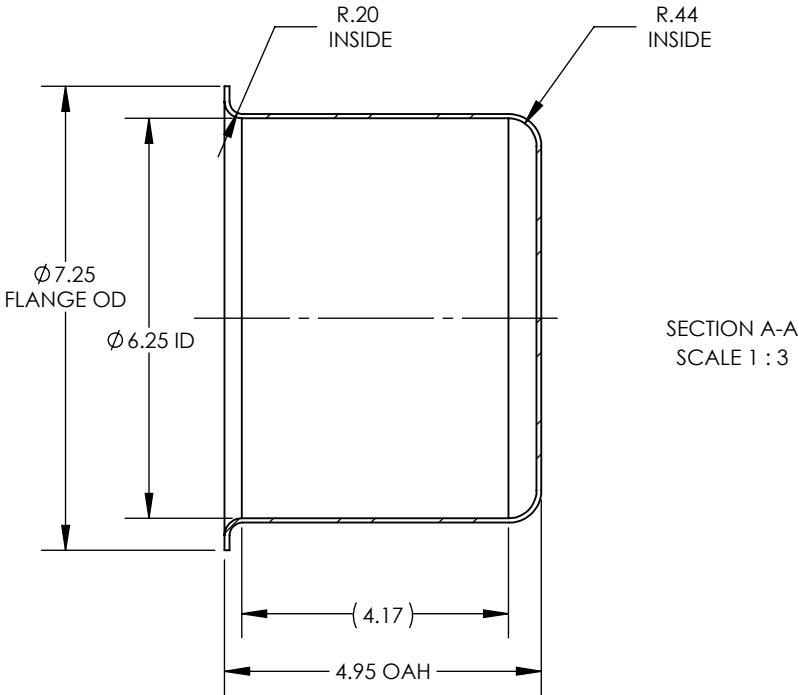


NOTES UNLESS OTHERWISE SPECIFIED

- 1. PARENT MATERIAL: 304 STAINLESS STEEL, 14 GAUGE (0.075" THICK)
- 2. PART IS SEAMLESS, FORMED FROM SHEET METAL WITHOUT WELDS.
- 3. STRAIGHT WALL THICKNESS IS +/-15% OF PARENT MATERIAL.
- 4. FINISH: NO METAL FINISHING REQUIRED. THE FINAL FINISH SHALL BE THE RESULT OF THE PROCESSES USED TO FABRICATE THE SHAPE, RESULTING IN AN ESTIMATED SURFACE ROUGHNESS OF 80 Ra.
- 5. ESTIMATED INTERNAL VOLUME: 0.67 GALLONS. (154.58 INCH³).



REVISIONS			
REV.	DESCRIPTION	DATE	APPROVED
00	INITIAL RELEASE FOR MANUFACTURING	DEC2001	J.KNAPP
A	Updated sheet format, corrected title block and revision block author information, changed ID from 6.25" to 5.88", changed Bottom Radius from 0.38" to 0.44", added Straight Wall ref dimension.	10JAN2017	R.DAVIS
B	Changed ID from 5.88" to 6.25"	MAR2019	R.DAVIS



SECTION A-A  
SCALE 1 : 3

UNLESS OTHERWISE SPECIFIED: 1. DO NOT SCALE DRAWING 2. DIMENSIONS ARE IN INCHES 3. TOLERANCE: FRACTIONAL ± .25 X.X     ±.1 X.XX   ±.03 X.XXX  ±.010 ANGULAR: ±2 DEG. 4. INTERPRET DRAWING PER ASME-Y14.5M-1994 STANDARDS 5. THIRD ANGLE PROJECTION 6. REMOVE BURRS & BREAK ALL SHARP EDGES WITH R0.03 ±.02		DRAWN	NAME	DATE	TITLE:  6" CUP WITH 5" OVERALL HEIGHT	
		CHECKED	R.DAVIS	MAR2019		
		ENG APPR.				
		MFG APPR.				
		Q.A.				
PROPRIETARY AND CONFIDENTIAL THE INFORMATION CONTAINED WITHIN THIS DRAWING IS THE SOLE PROPERTY OF TOLEDO METAL SPINNING COMPANY. ANY REPRODUCTION IN PART OR AS A WHOLE WITHOUT WRITTEN PERMISSION OF TOLEDO METAL SPINNING COMPANY IS PROHIBITED.					SIZE A	DRAWING NUMBER TMSCUP6414
					SCALE: 1:2.5	WEIGHT: 2.67
					SHEET 1 OF 1	

D

C

B

A