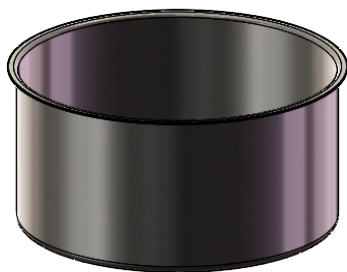
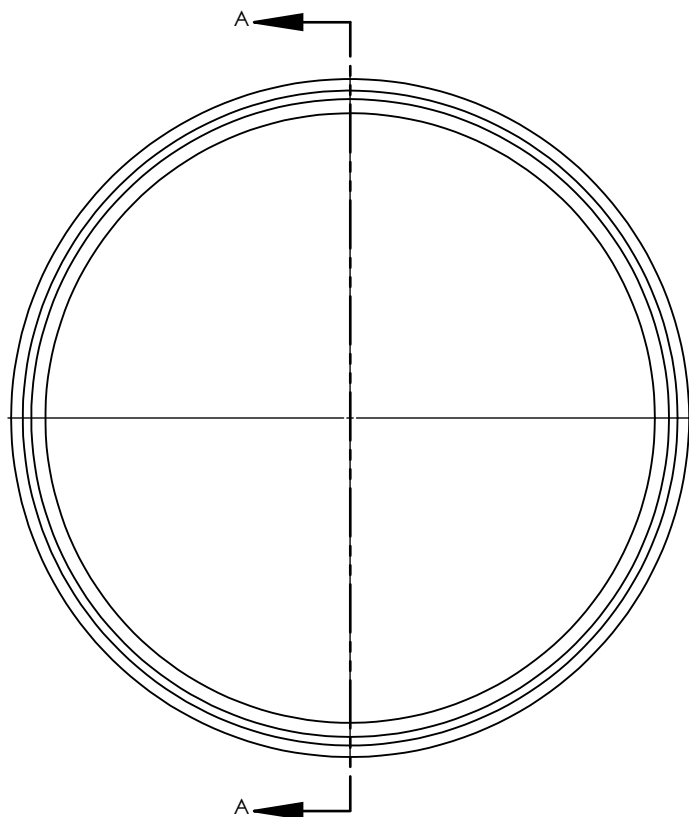


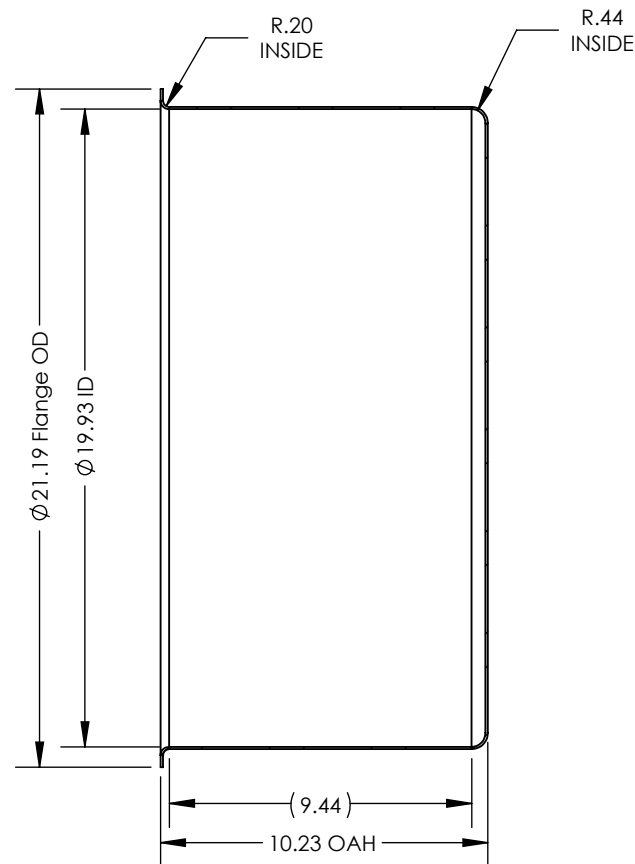
**NOTES UNLESS OTHERWISE SPECIFIED**

1. PARENT MATERIAL: 304 STAINLESS STEEL, 14 GAUGE (0.075" THICK)
2. PART IS SEAMLESS, FORMED FROM SHEET METAL WITHOUT WELDS.
3. STRAIGHT WALL THICKNESS IS +/-15% OF PARENT MATERIAL.
4. FINISH: NO METAL FINISHING REQUIRED. THE FINAL FINISH SHALL BE THE RESULT OF THE PROCESSES USED TO FABRICATE THE SHAPE, RESULTING IN AN ESTIMATED SURFACE ROUGHNESS OF 80 Ra.
5. ESTIMATED INTERNAL VOLUME: 13.34 GALLONS. (3081.97 INCH<sup>3</sup>).



SCALE 1 : 12

| REVISIONS |   |            |            |
|-----------|---|------------|------------|
| REV.      | DESCRIPTION   | DATE       | APPROVED   |
| 00        | INITIAL RELEASE FOR MANUFACTURING   | DEC2001    | J.KNAPP    |
| 01        | Changed Flange Radius from 0.20" to 0.25", changed ID from 19.91" to 19.93"   | 21 JAN2010 | L.FERNANDO |
| A         | Updated sheet format, corrected title block and revision block author information, changed Overall Height from 10.00" to 10.23", changed Flange Radius from 0.25" to 0.20", changed Bottom Radius from 0.50" to 0.44", added Straight Wall ref dimension. | MAR2019    | R.DAVIS    |



SECTION A-A

|   |   |         |               |   |   |  |  |
|---|---|---------|---------------|---|---|--|--|
| UNLESS OTHERWISE SPECIFIED:<br>1. DO NOT SCALE DRAWING<br>2. DIMENSIONS ARE IN INCHES<br>3. TOLERANCE:<br>FRACTIONAL ± .25<br>X.X     ±.1<br>X.XX    ±.03<br>X.XXX   ±.010<br>ANGULAR: ±2 DEG.<br>4. INTERPRET DRAWING PER<br>ASME-Y14.5M-1994 STANDARDS<br>5. THIRD ANGLE PROJECTION<br>6. REMOVE BURRS & BREAK ALL<br>SHARP EDGES WITH R0.03 ±.02 |   | NAME    | DATE          | TITLE:<br><br>20" CUP WITH 10" OVERALL HEIGHT |   |  |  |
|   | DRAWN   | R.DAVIS | MAR2019       |   |   |  |  |
|   | CHECKED   |         |               |   |   |  |  |
|   | ENG APPR.   |         |               |   |   |  |  |
|   | MFG APPR.   |         |               |   |   |  |  |
|   |   | Q.A.    |               |   | SIZE     DRAWING NUMBER     REV<br>A <b>TMSCUP201014 REV A</b> <b>A</b> |  |  |
|   | <b><u>PROPRIETARY AND CONFIDENTIAL</u></b><br><br>THE INFORMATION CONTAINED WITHIN THIS<br>DRAWING IS THE SOLE PROPERTY OF<br>TOLEDO METAL SPINNING COMPANY. ANY<br>REPRODUCTION IN PART OR AS A WHOLE<br>WITHOUT WRITTEN PERMISSION OF TOLEDO<br>METAL SPINNING COMPANY IS PROHIBITED. |         |               |   |   |  |  |
|   | SCALE: 1:6  |         | WEIGHT: 19.76 |   | SHEET 1 OF 1  |  |  |