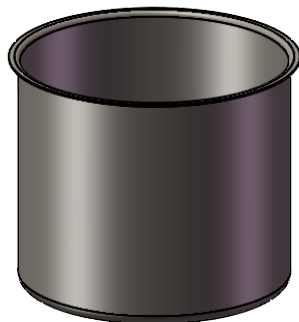
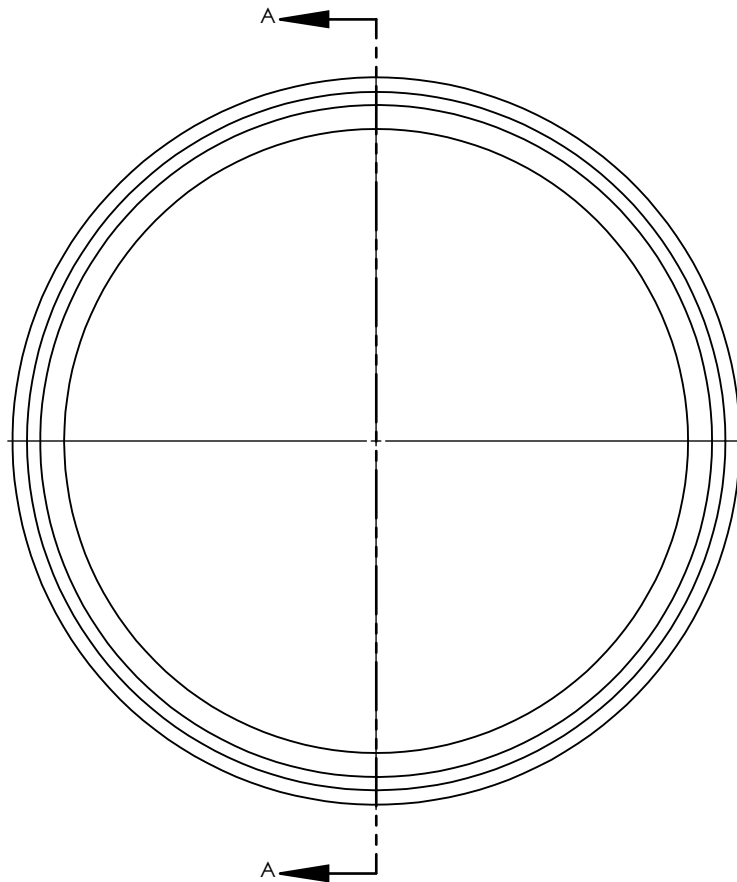


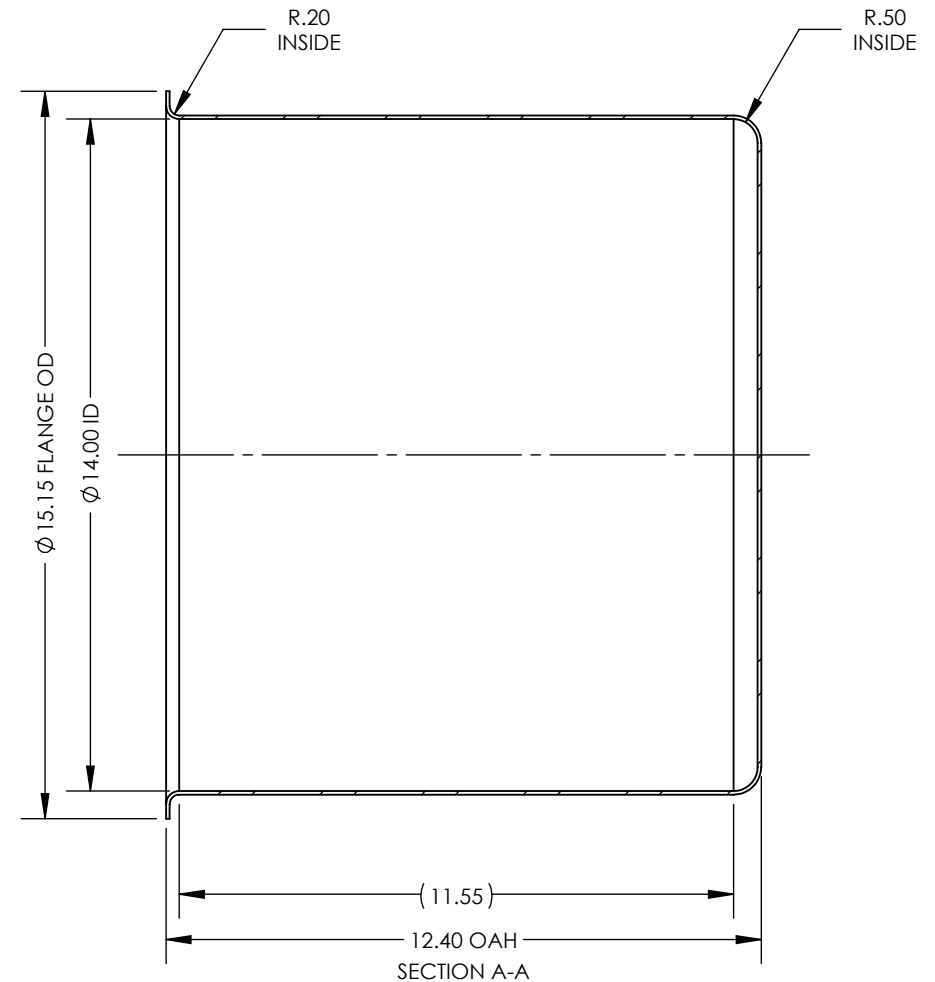
NOTES UNLESS OTHERWISE SPECIFIED

1. PARENT MATERIAL: 316 STAINLESS STEEL, 14 GAUGE (0.075" THICK)
2. FINISH: NO METAL FINISHING REQUIRED. THE FINAL FINISH SHALL BE THE RESULT OF THE PROCESSES USED TO FABRICATE THE SHAPE, RESULTING IN AN ESTIMATED SURFACE ROUGHNESS OF 80 RO.
3. ESTIMATED INTERNAL VOLUME: 8.21 GALLONS. (1895.68 INCH³).

REVISIONS			
REV.	DESCRIPTION	DATE	APPROVED
A	INITIAL RELEASE FOR MANUFACTURING	05MAY2020	K.SCRIVENER
B	INTERNAL VOLUME WAS 4.21 GALLONS	3/11/2022	M.BODETTE



SCALE 1 : 10



UNLESS OTHERWISE SPECIFIED:
1. DO NOT SCALE DRAWING
2. DIMENSIONS ARE IN INCHES
3. TOLERANCE:
 FRACTIONAL $\pm .25$
 X.X $\pm .1$
 X.XX $\pm .03$
 X.XXX $\pm .010$
 ANGULAR: ± 2 DEG.
4. INTERPRET DRAWING PER
 ASME-Y14.5M-1994 STANDARDS
5. THIRD ANGLE PROJECTION
6. REMOVE BURRS & BREAK ALL
 SHARP EDGES WITH R0.03 $\pm .02$

	NAME	DATE
DRAWN	J.KNAPP	12DEC2001
CHECKED		
ENG APPR.		
MFG APPR.		
Q.A.		

PROPRIETARY AND CONFIDENTIAL

THE INFORMATION CONTAINED WITHIN THIS
DRAWING IS THE SOLE PROPERTY OF
TOLEDO METAL SPINNING COMPANY. ANY
REPRODUCTION IN PART OR AS A WHOLE
WITHOUT WRITTEN PERMISSION OF TOLEDO
METAL SPINNING COMPANY IS PROHIBITED.

TITLE:	
--------	--

14" CUP WITH 12" OVERALL HEIGHT

SIZE	DRAWING NUMBER		REV
A	TMSCUP141214-316SS		B
SCALE: 1:4		WEIGHT: 15.40	SHEET 1 OF 1