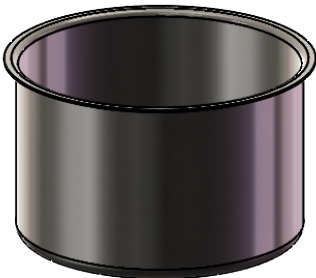
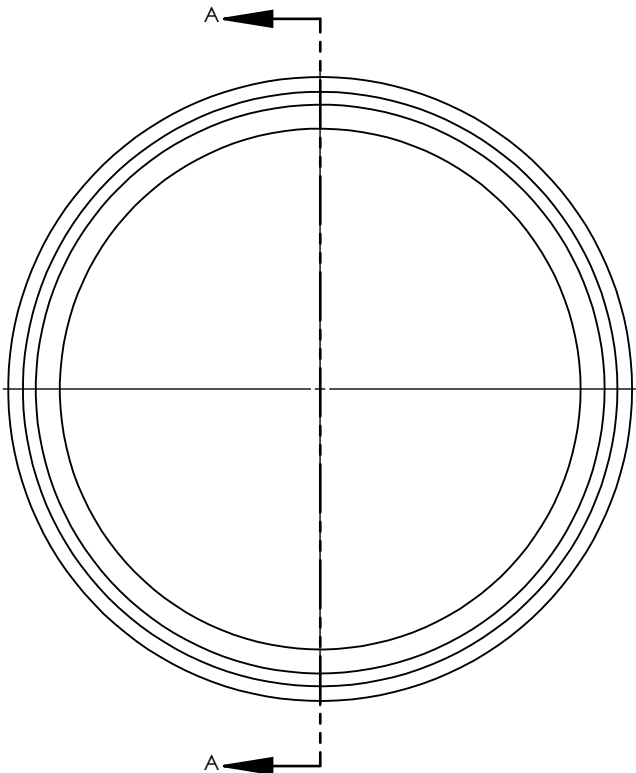


NOTES UNLESS OTHERWISE SPECIFIED

- 1. PARENT MATERIAL: 304 STAINLESS STEEL, 14 GAUGE (0.075" THICK)
- 2. PART IS SEAMLESS, FORMED FROM SHEET METAL WITHOUT WELDS.
- 3. STRAIGHT WALL THICKNESS IS +/-15% OF PARENT MATERIAL.
- 4. FINISH: NO METAL FINISHING REQUIRED. THE FINAL FINISH SHALL BE THE RESULT OF THE PROCESSES USED TO FABRICATE THE SHAPE, RESULTING IN AN ESTIMATED SURFACE ROUGHNESS OF 80 Ra.
- 5. ESTIMATED INTERNAL VOLUME: 3.54 GALLONS. (818.31 INCH³).



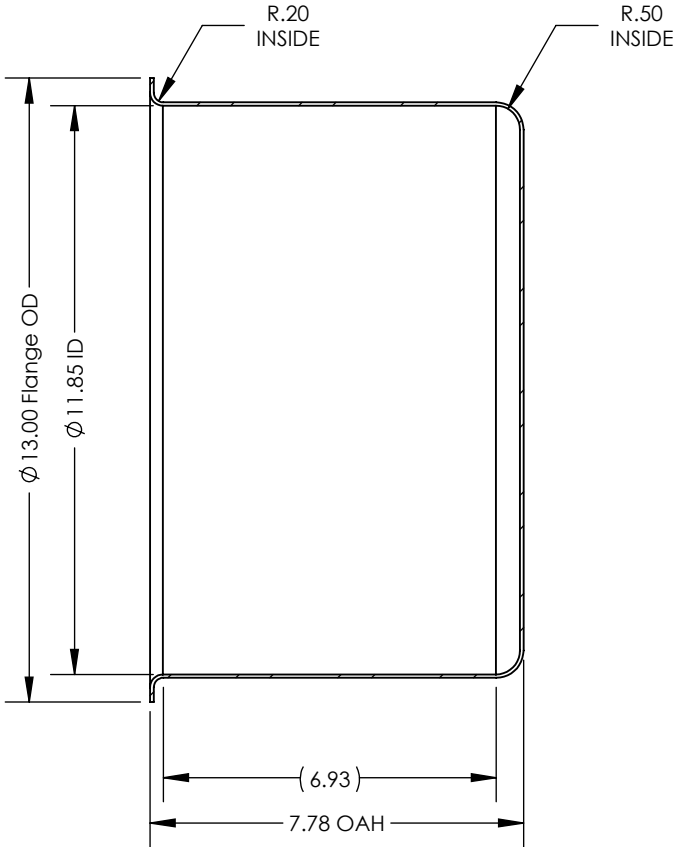
SCALE 1 : 8

UNLESS OTHERWISE SPECIFIED:
1. DO NOT SCALE DRAWING
2. DIMENSIONS ARE IN INCHES
3. TOLERANCE:
 FRACTIONAL ± .25
 X.X ±.1
 X.XX ±.03
 X.XXX ±.010
 ANGULAR: ±2 DEG.
4. INTERPRET DRAWING PER ASME-Y14.5M-1994 STANDARDS
5. THIRD ANGLE PROJECTION
6. REMOVE BURRS & BREAK ALL SHARP EDGES WITH R0.03 ±.02

	NAME	DATE
DRAWN	R.DAVIS	MAR2019
CHECKED		
ENG APPR.		
MFG APPR.		
Q.A.		
PROPRIETARY AND CONFIDENTIAL		
THE INFORMATION CONTAINED WITHIN THIS DRAWING IS THE SOLE PROPERTY OF TOLEDO METAL SPINNING COMPANY. ANY REPRODUCTION IN PART OR AS A WHOLE WITHOUT WRITTEN PERMISSION OF TOLEDO METAL SPINNING COMPANY IS PROHIBITED.		

TITLE:		
12" CUP WITH 8" OVERALL HEIGHT		
SIZE A	DRAWING NUMBER TMSCUP12714 REV B	REV B
SCALE: 1:4		WEIGHT: 8.28
SHEET 1 OF 1		

REVISIONS			
REV.	DESCRIPTION	DATE	APPROVED
00	INITIAL RELEASE FOR MANUFACTURING	DEC2001	J.KNAPP
01	Changed OAH from 7.37" to 7.57"	16JUN2003	J.KNAPP
A	Updated sheet format, corrected title block and revision block author information, changed Flange Radius from 0.19" to 0.20", added Straight Wall ref dimension.	11JAN2017	R.DAVIS
B	Changed ID from 11.83" to 11.85", changed OAH from 7.57" to 7.78".	MAR2019	R.DAVIS



SECTION A-A