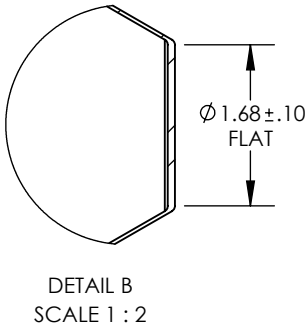
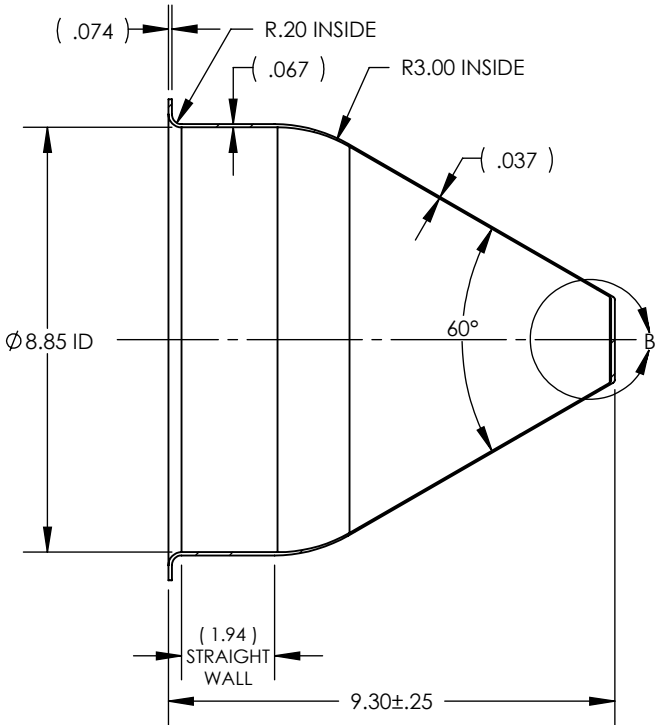
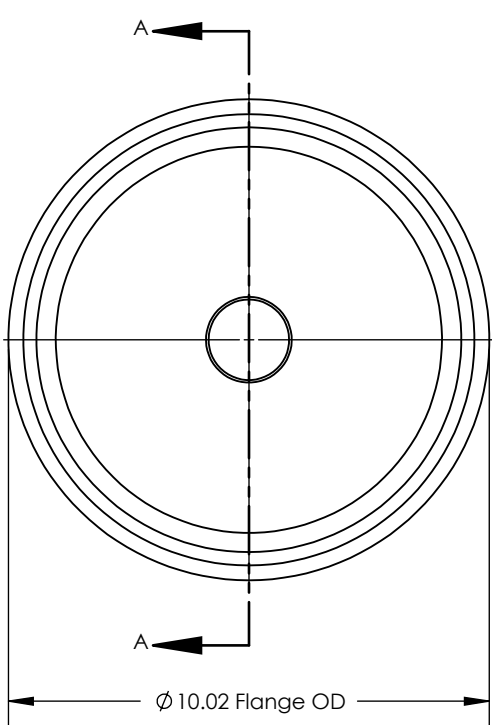


NOTES UNLESS OTHERWISE SPECIFIED

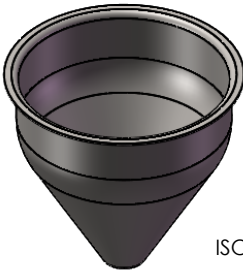
- 1. PARENT MATERIAL: 304 STAINLESS STEEL, 14 GAUGE (0.075" THICK)
- 2. FINISH: NO METAL FINISHING REQUIRED. THE FINAL FINISH SHALL BE THE RESULT OF THE PROCESSES USED TO FABRICATE THE SHAPE, RESULTING IN AN ESTIMATED SURFACE ROUGHNESS OF 80 Ra.
- 3. ESTIMATED INTERNAL VOLUME: 1.49 GALLONS. (344.1 INCH³)

REVISIONS

REV.	DESCRIPTION	DATE	APPROVED
00	INITIAL RELEASE FOR MANUFACTURING	14DEC2000	J.KNAPP
01	CHANGED FLAT FROM 1.86" TO 1.65"	20JAN2010	L.FERNANDEZ
02	CHANGED FLAT FROM 1.65" TO 1.68"	10APR2012	L.FERNANDEZ
03	CHANGED STRAIGHT WALL FROM 3.10" TO 2.80"	19JUL2012	D.JOHNSON
A	UPDATED SHEET FORMAT, CORRECTED TITLE BLOCK AND REVISION BLOCK AUTHOR INFORMATION, CHANGED RADIUS FROM 1.00" TO 3.00", CORRECTED STRAIGHT WALL DIMENSION CALLOUT, CHANGED TITLE FROM 3" STRAIGHT WALL TO 2", ADDED 0.10" TOLERANCE TO FLAT DIMENSION.	23FEB2016	R.DAVIS
B	UPDATED DRAWING TO CURRENT FORMAT	07JUL2020	K.DRUMHILLER



SECTION A-A



ISOMETRIC VIEW
SCALE 1 : 8

UNLESS OTHERWISE SPECIFIED:
1. DO NOT SCALE DRAWING
2. DIMENSIONS ARE IN INCHES
3. TOLERANCE:
FRACTIONAL ± .25
X.X ±.1
X.XX ±.03
X.XXX ±.010
ANGULAR: ±2 DEG.
4. INTERPRET DRAWING PER
ASME-Y14.5M-1994 STANDARDS
5. THIRD ANGLE PROJECTION
6. REMOVE BURRS & BREAK ALL
SHARP EDGES WITH R0.03 ±.02

NAME	DATE
J.KNAPP	14DEC2000
PROPRIETARY AND CONFIDENTIAL	
THE INFORMATION CONTAINED WITHIN THIS DRAWING IS THE SOLE PROPERTY OF TOLEDO METAL SPINNING COMPANY. ANY REPRODUCTION IN PART OR AS A WHOLE WITHOUT WRITTEN PERMISSION OF TOLEDO METAL SPINNING COMPANY IS PROHIBITED.	

TITLE:
9" HOPPER WITH 2" STRAIGHT WALL

SIZE	DRAWING NUMBER	REV
A	TMS9314	B
SCALE: 1:4	WEIGHT: 3.23	SHEET 1 OF 1