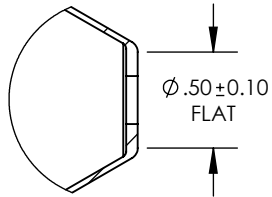
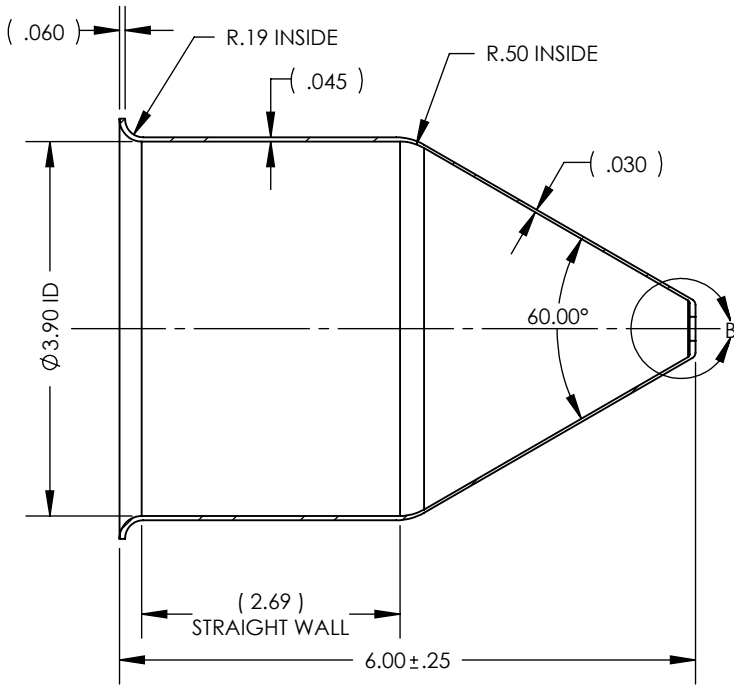
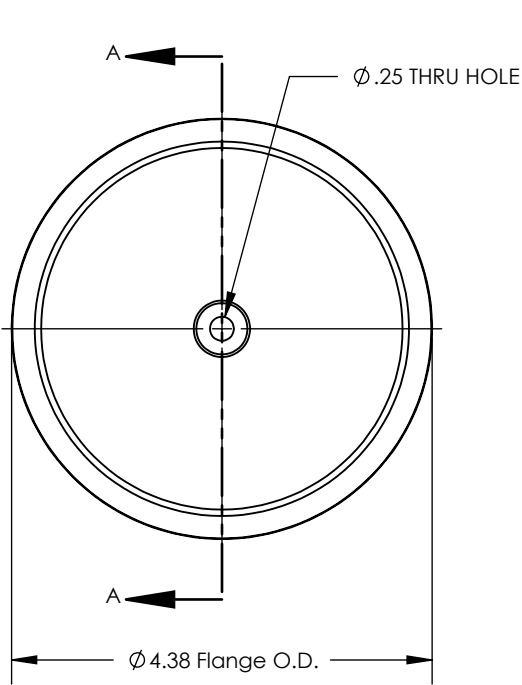


NOTES UNLESS OTHERWISE SPECIFIED

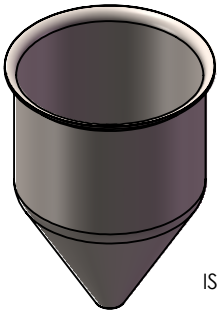
- PARENT MATERIAL: 316 STAINLESS STEEL, 16 GAUGE (0.060" THICK)
- FINISH: NO METAL FINISHING REQUIRED. THE FINAL FINISH SHALL BE THE RESULT OF THE PROCESSES USED TO FABRICATE THE SHAPE, RESULTING IN AN ESTIMATED SURFACE ROUGHNESS OF 80 Ra.
- ESTIMATED INTERNAL VOLUME: 0.22 GALLONS (50.05 INCH³)

REVISIONS			
REV.	DESCRIPTION	DATE	APPROVED
00	INITIAL RELEASE FOR MANUFACTURING	14DEC2000	J.KNAPP
01	Changed Flat Diameter from 0.51" TO 0.50"	19JAN2010	L.FERNANDEZ
02	Chnaged ID from 3.99" to 3.91"	24JUL2012	L.FERNANDEZ
A	Updated sheet format, corrected title block and revision block author information	08APR2016	R.DAVIS
B	Corrected ID from 3.91" to 3.91", corrected Flange Radius from 0.13" to 0.188", corrected Radius from 0.25" to 0.50", added 0.25" tolerance to Overall Height	17MAR2017	R.DAVIS



DETAIL B
SCALE 1 : 1

SECTION A-A



ISOMETRIC VIEW
SCALE 1 : 4

UNLESS OTHERWISE SPECIFIED:
 1. DO NOT SCALE DRAWING
 2. DIMENSIONS ARE IN INCHES
 3. TOLERANCE:
 FRACTIONAL ± .25
 X.X ±.1
 X.XX ±.03
 X.XXX ±.010
 ANGULAR: ±2 DEG.
 4. INTERPRET DRAWING PER ASME-Y14.5M-1994 STANDARDS
 5. THIRD ANGLE PROJECTION
 6. REMOVE BURRS & BREAK ALL SHARP EDGES WITH R0.03 ±.02

NAME	DATE
J.KNAPP	14DEC2000
CHECKED	
ENG APPR.	
MFG APPR.	
Q.A.	
PROPRIETARY AND CONFIDENTIAL THE INFORMATION CONTAINED WITHIN THIS DRAWING IS THE SOLE PROPERTY OF TOLEDO METAL SPINNING COMPANY. ANY REPRODUCTION IN PART OR AS A WHOLE WITHOUT WRITTEN PERMISSION OF TOLEDO METAL SPINNING COMPANY IS PROHIBITED.	

TITLE:
 4" HOPPER WITH 3" STRAIGHT WALL

SIZE	DRAWING NUMBER	REV
A	TMS4316-316SS	B
SCALE: 1:2		WEIGHT: 0.73
SHEET 1 OF 1		