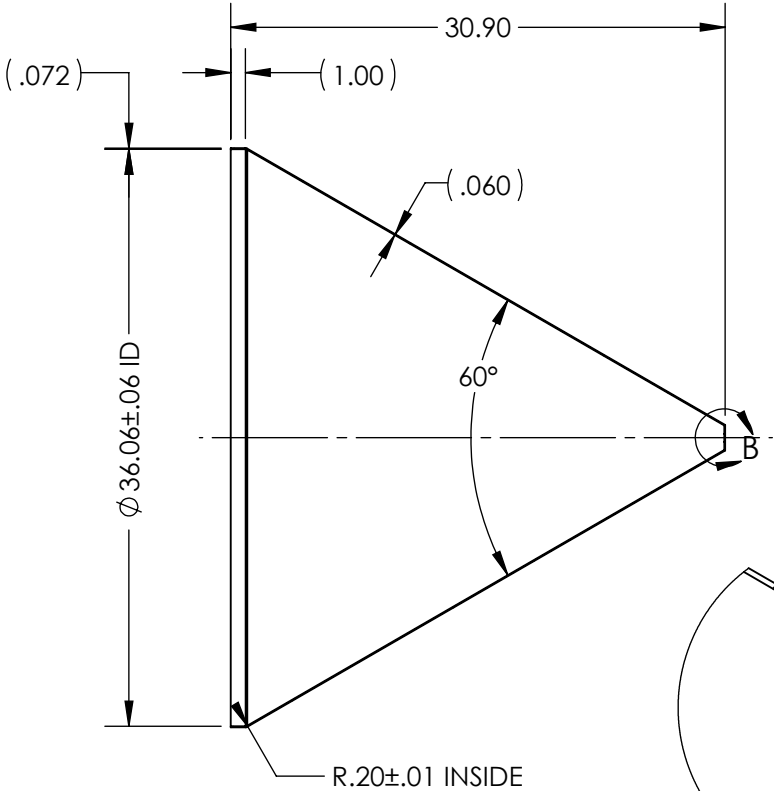
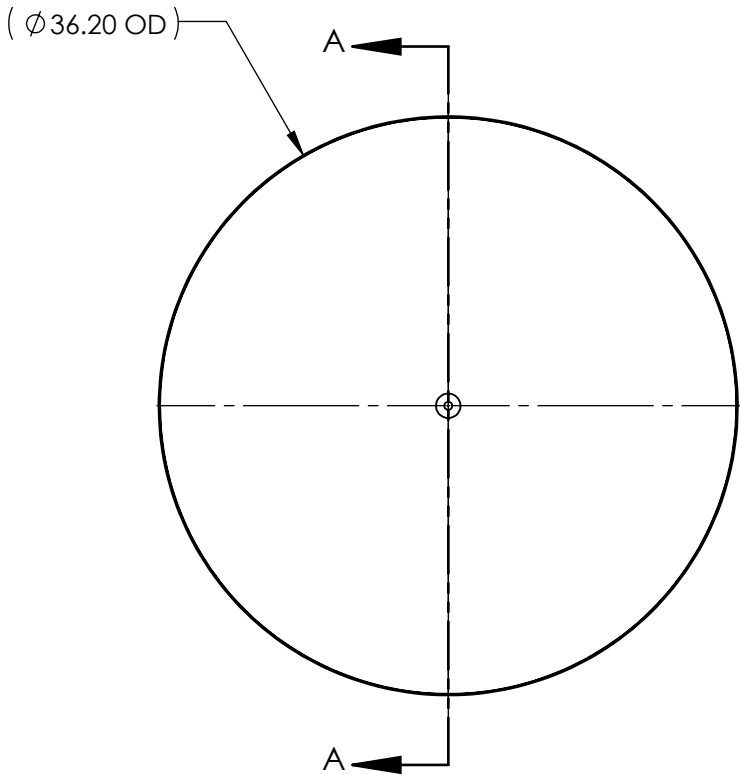


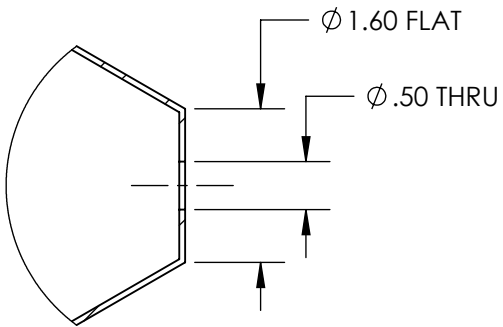
NOTES UNLESS OTHERWISE SPECIFIED

1. MATERIAL: .125" (11 GA.) 304 STAINLESS STEEL
2. FINISH: NO METAL FINISHING REQUIRED. THE FINAL FINISH SHALL BE THE RESULT OF THE PROCESSES USED TO FABRICATE THE SHAPE.

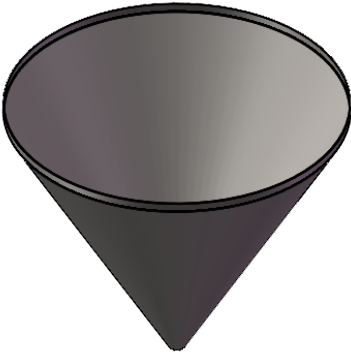
REVISIONS			
REV.	DESCRIPTION	DATE	APPROVED
A	INITIAL RELEASE FOR MANUFACTURING	19SEP2017	B.KEEL
B	UPDATED DRAWING TO CURRENT FORMAT	16JUL2020	K.DRUMHILLER
C	ADDED MATERIAL THICKNESS DIMENSIONS	12/13/2021	M.BODETTE



SECTION A-A



DETAIL B
SCALE 1 : 2



UNLESS OTHERWISE SPECIFIED: 1. DO NOT SCALE DRAWING 2. DIMENSIONS ARE IN INCHES 3. TOLERANCE: FRACTIONAL ± .25 X.X ±.1 X.XX ±.03 X.XXX ±.010 ANGULAR: ±2 DEG. 4. INTERPRET DRAWING PER ASME-Y14.5M-1994 STANDARDS 5. THIRD ANGLE PROJECTION 6. REMOVE BURRS & BREAK ALL SHARP EDGES WITH R0.03 ±.02		NAME	DATE	TITLE: 36" HOPPER WITH 1" STRAIGHT WALL		
	DRAWN	K.SCRIVENER	19SEP2017			
	<u>PROPRIETARY AND CONFIDENTIAL</u>			SIZE	DRAWING NUMBER	REV
	THE INFORMATION CONTAINED WITHIN THIS DRAWING IS THE SOLE PROPERTY OF TOLEDO METAL SPINNING COMPANY. ANY REPRODUCTION IN PART OR AS A WHOLE WITHOUT WRITTEN PERMISSION OF TOLEDO METAL SPINNING COMPANY IS PROHIBITED.			A	TMS36111	C
	SCALE: 1:12		WEIGHT:		SHEET 1 OF 1	