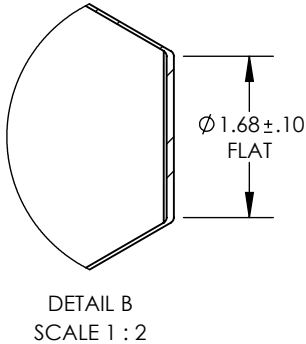
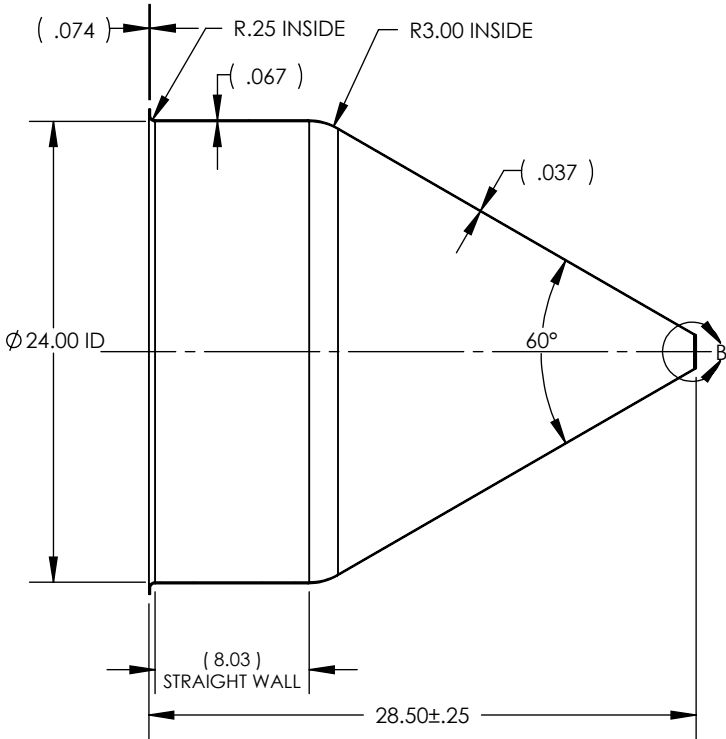
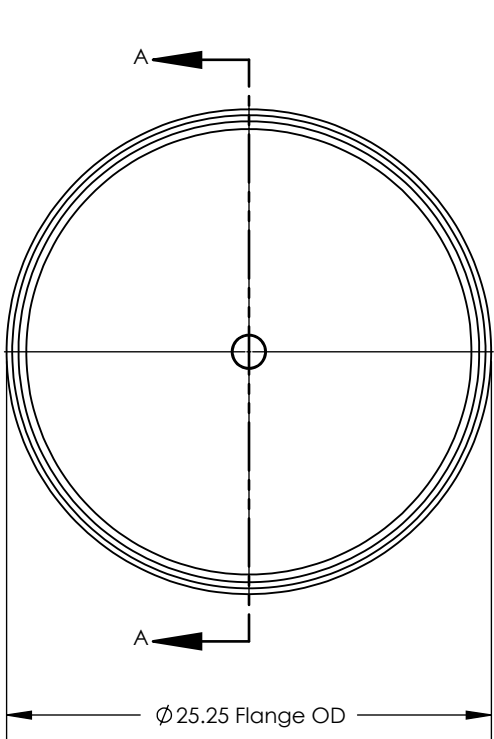


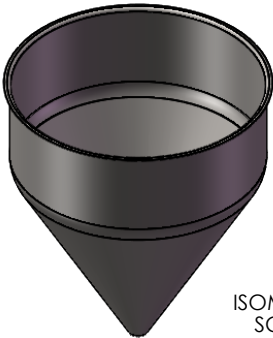
NOTES UNLESS OTHERWISE SPECIFIED

- 1. PARENT MATERIAL: 304 STAINLESS STEEL, 14 GAUGE (0.075" THICK)
- 2. FINISH: NO METAL FINISHING REQUIRED. THE FINAL FINISH SHALL BE THE RESULT OF THE PROCESSES USED TO FABRICATE THE SHAPE, RESULTING IN AN ESTIMATED SURFACE ROUGHNESS OF 80 Ra.
- 3. ESTIMATED INTERNAL VOLUME: 31.48 GALLONS (7273.01 INCH³)

REVISIONS			
REV.	DESCRIPTION	DATE	APPROVED
00	INITIAL RELEASE FOR MANUFACTURING	21DEC2000	J.KNAPP
01	CHANGED FLAT FROM 1.86" TO 1.85"	21JAN2010	L.FERNANDEZ
02	CHANGED STRAIGHT WALL FROM 9.10" TO 9.00"	29FEB2012	L.FERNANDEZ
03	CHANGED RADIUS FROM 1.00" TO 3.00", CHANGED FLANGE RADIUS FROM 0.23" TO 0.22", CHANGED FLAT FROM 1.85" TO 1.68", CHANGED STRAIGHT WALL FROM 9.00" TO 8.41"	07JUL2012	D.JOHNSON
A	UPDATED SHEET FORMAT, CORRECTED TITLE BLOCK AND REVISION BLOCK AUTHOR INFORMATION, CORRECTED STRAIGHT WALL DIMENSION CALLOUT, ADDED 0.10" TOLERANCE TO FLAT DIMENSION, CHANGED FLANGE RADIUS FROM 0.22" TO 0.20", CHANGED TITLE FROM 9" STRAIGHT WALL TO 8"	21MAR2016	R.DAVIS
B	CHANGED FLANGE RADIUS FROM 0.20" TO 0.25"	20MAR2017	R.DAVIS
C	UPDATED DRAWING TO CURRENT FORMAT	16JUL2020	K.DRUMHILLER



SECTION A-A



UNLESS OTHERWISE SPECIFIED:  
1. DO NOT SCALE DRAWING  
2. DIMENSIONS ARE IN INCHES  
3. TOLERANCE:  
FRACTIONAL ± .25  
X.X ±.1  
X.XX ±.03  
X.XXX ±.010  
ANGULAR: ±2 DEG.  
4. INTERPRET DRAWING PER ASME-Y14.5M-1994 STANDARDS  
5. THIRD ANGLE PROJECTION  
6. REMOVE BURRS & BREAK ALL SHARP EDGES WITH R0.03 ±.02

NAME	DATE
J.KNAPP	21DEC2000
PROPRIETARY AND CONFIDENTIAL	
THE INFORMATION CONTAINED WITHIN THIS DRAWING IS THE SOLE PROPERTY OF TOLEDO METAL SPINNING COMPANY. ANY REPRODUCTION IN PART OR AS A WHOLE WITHOUT WRITTEN PERMISSION OF TOLEDO METAL SPINNING COMPANY IS PROHIBITED.	

TITLE:		
24" HOPPER WITH 8" STRAIGHT WALL		
SIZE	DRAWING NUMBER	REV
A	TMS24914	C
SCALE: 1:10		WEIGHT: 23.77
SHEET 1 OF 1		