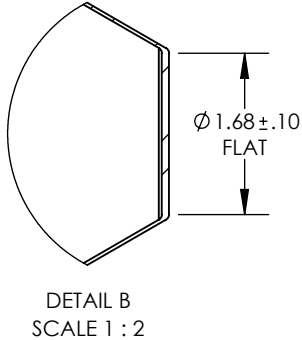
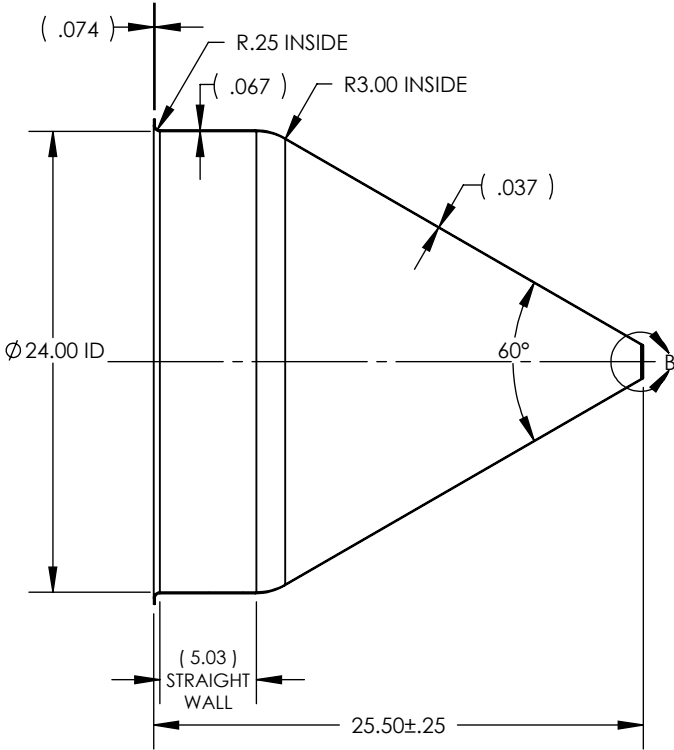
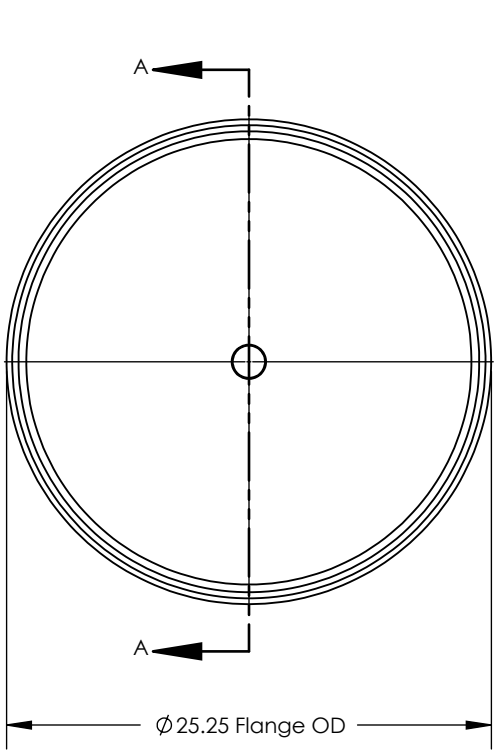


NOTES UNLESS OTHERWISE SPECIFIED

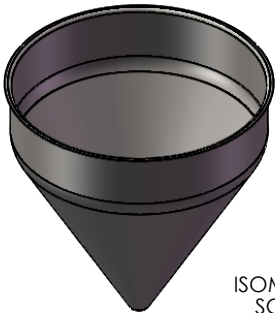
- 1. PARENT MATERIAL: 304 STAINLESS STEEL, 14 GAUGE (0.075" THICK)
- 2. FINISH: NO METAL FINISHING REQUIRED. THE FINAL FINISH SHALL BE THE RESULT OF THE PROCESSES USED TO FABRICATE THE SHAPE, RESULTING IN AN ESTIMATED SURFACE ROUGHNESS OF 80 Ra.
- 3. ESTIMATED INTERNAL VOLUME: 25.64 GALLONS (5922.39 INCH³)

REVISIONS

| REV. | DESCRIPTION | DATE | APPROVED |
|------|---|-----------|--------------|
| 00 | INITIAL RELEASE FOR MANUFACTURING | 15DEC2000 | J.KNAPP |
| 01 | CHANGED RADIUS FROM 1.00" TO 0.75", CHANGED STRAIGHT WALL FROM 6.15" TO 6.20" | 05MAY2010 | L.FERNANDEZ |
| 02 | CHANGED STRAIGHT WALL FROM 6.20" TO 5.06", CHANGED OVERALL HEIGHT FROM 25.6" TO 25.20" | 29FEB2012 | L.FERNANDEZ |
| 03 | CHANGED OVERALL HEIGHT FROM 25.20" TO 25.50", CHANGED RADIUS FROM 0.75" TO 3.00", CHANGED FLANGE RADIUS FROM 0.23" TO 0.22", CHANGED FLAT FROM 1.89" TO 1.68" | 26JUN2012 | D.JOHNSON |
| A | UPDATED SHEET FORMAT, CORRECTED TITLE BLOCK AND REVISION BLOCK AUTHOR INFORMATION, CORRECTED STRAIGHT WALL DIMENSION CALLOUT, ADDED 0.10" TOLERANCE TO FLAT DIMENSION, CHANGED FLANGE RADIUS FROM 0.22" TO 0.20", CHANGED TITLE FROM 6" STRAIGHT WALL TO 5" | 10MAR2016 | R.DAVIS |
| B | CHANGED FLANGE OD FROM 25.25" TO 25.13", CHANGED FLANGE RADIUS FROM 0.20" TO 0.25" | 17MAR2017 | R.DAVIS |
| C | UPDATED DRAWING TO CURRENT FORMAT | 16JUL2020 | K.DRUMHILLER |



SECTION A-A



ISOMETRIC VIEW
SCALE 1 : 18

UNLESS OTHERWISE SPECIFIED:
1. DO NOT SCALE DRAWING
2. DIMENSIONS ARE IN INCHES
3. TOLERANCE:
FRACTIONAL ± .25
X.X ±.1
X.XX ±.03
X.XXX ±.010
ANGULAR: ±2 DEG.
4. INTERPRET DRAWING PER
ASME-Y14.5M-1994 STANDARDS
5. THIRD ANGLE PROJECTION
6. REMOVE BURRS & BREAK ALL
SHARP EDGES WITH R0.03 ±.02

| NAME | DATE |
|--|-----------|
| J.KNAPP | 15DEC2000 |
| | |
| | |
| | |
| | |
| PROPRIETARY AND CONFIDENTIAL | |
| THE INFORMATION CONTAINED WITHIN THIS DRAWING IS THE SOLE PROPERTY OF TOLEDO METAL SPINNING COMPANY. ANY REPRODUCTION IN PART OR AS A WHOLE WITHOUT WRITTEN PERMISSION OF TOLEDO METAL SPINNING COMPANY IS PROHIBITED. | |

TITLE:
24" HOPPER WITH 5" STRAIGHT WALL

| SIZE | DRAWING NUMBER | REV |
|-------------|----------------|--------------|
| A | TMS24614 | C |
| SCALE: 1:10 | WEIGHT: 19.38 | SHEET 1 OF 1 |