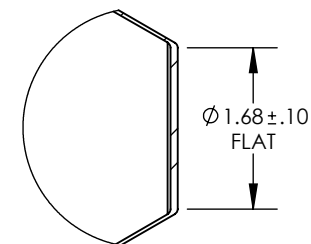
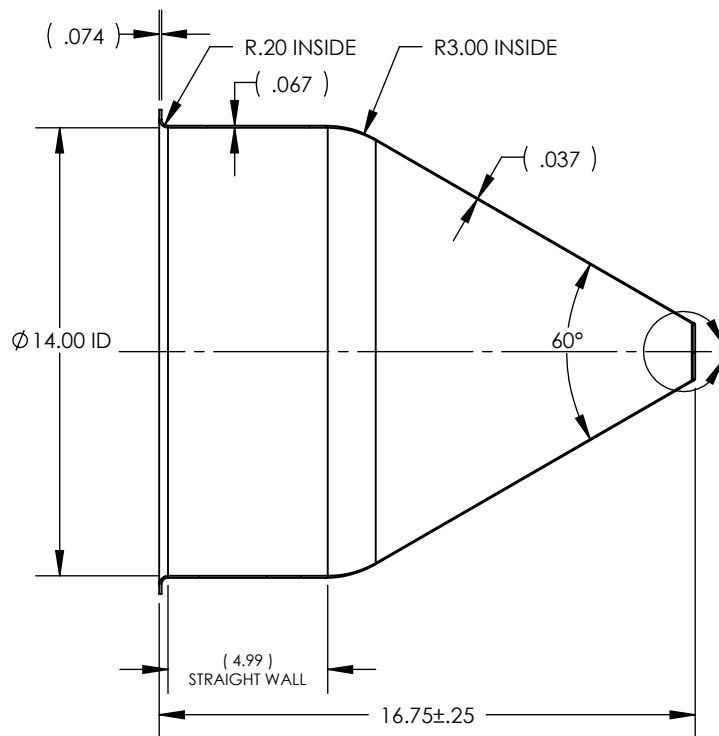
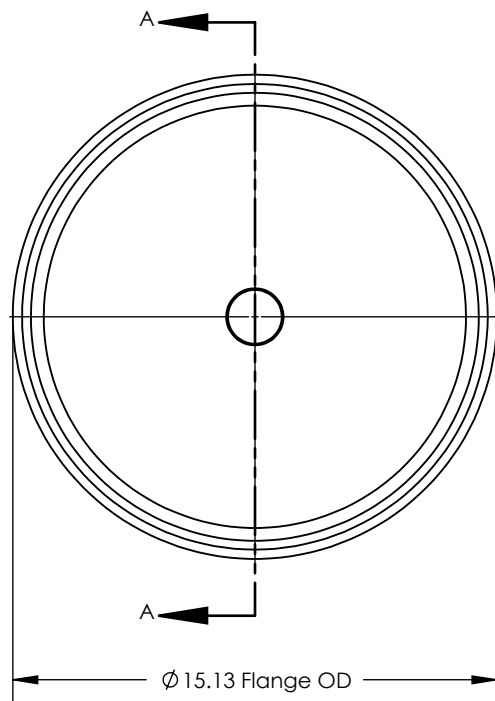


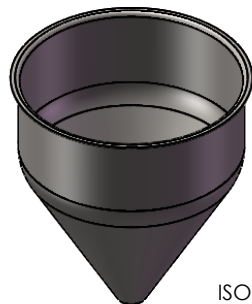
NOTES UNLESS OTHERWISE SPECIFIED

1. PARENT MATERIAL: 304 STAINLESS STEEL, 14 GAUGE (0.075" THICK)
2. FINISH: NO METAL FINISHING REQUIRED. THE FINAL FINISH SHALL BE THE RESULT OF THE PROCESSES USED TO FABRICATE THE SHAPE, RESULTING IN AN ESTIMATED SURFACE ROUGHNESS OF 80 Ra.
3. ESTIMATED INTERNAL VOLUME: 6.72 GALLONS. (1553.3 INCH³)

REVISIONS			
REV.	DESCRIPTION	DATE	APPROVED
00	INITIAL RELEASE FOR MANUFACTURING	15DEC2000	J.KNAPP
01	CHANGED OVERALL HEIGHT FROM 16.4" TO 16.75"	21.JAN2012	L.FERNANDEZ
02	CHANGED FLAT FROM 1.80" TO 1.68"	10APR2012	L.FERNANDEZ
A	UPDATED SHEET FORMAT, CORRECTED TITLE BLOCK AND REVISION BLOCK AUTHOR INFORMATION, CHANGED RADIUS FROM 0.75" TO 3.00", CORRECTED STRAIGHT WALL DIMENSION CALLOUT, ADDED 0.10" TOLERANCE TO FLAT DIMENSION.	19FEB2016	R.DAVIS
B	UPDATED DRAWING TO CURRENT FORMAT	16JUL2020	K.DRUMHILLER



DETAIL B
SCALE 1 : 2



ISOMETRIC VIEW
SCALE 1 : 12

SECTION A-A

UNLESS OTHERWISE SPECIFIED: 1. DO NOT SCALE DRAWING 2. DIMENSIONS ARE IN INCHES 3. TOLERANCE: FRACTIONAL ± .25 X.X ±.1 X.XX ±.03 X.XXX ±.010 ANGULAR: ±2 DEG. 4. INTERPRET DRAWING PER ASME-Y14.5M-1994 STANDARDS 5. THIRD ANGLE PROJECTION 6. REMOVE BURRS & BREAK ALL SHARP EDGES WITH R0.03 ±.02		NAME	DATE	TITLE: 14" HOPPER WITH 5" STRAIGHT WALL		
	DRAWN	J.KNAPP	15DEC2000			
		PROPRIETARY AND CONFIDENTIAL		SIZE A	DRAWING NUMBER TMS14514	REV B
		THE INFORMATION CONTAINED WITHIN THIS DRAWING IS THE SOLE PROPERTY OF TOLEDO METAL SPINNING COMPANY. ANY REPRODUCTION IN PART OR AS A WHOLE WITHOUT WRITTEN PERMISSION OF TOLEDO METAL SPINNING COMPANY IS PROHIBITED.				
				SCALE: 1:6	WEIGHT: 8.85	SHEET 1 OF 1