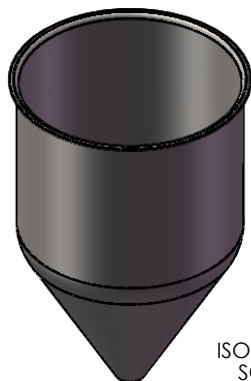
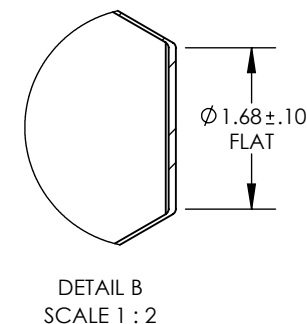
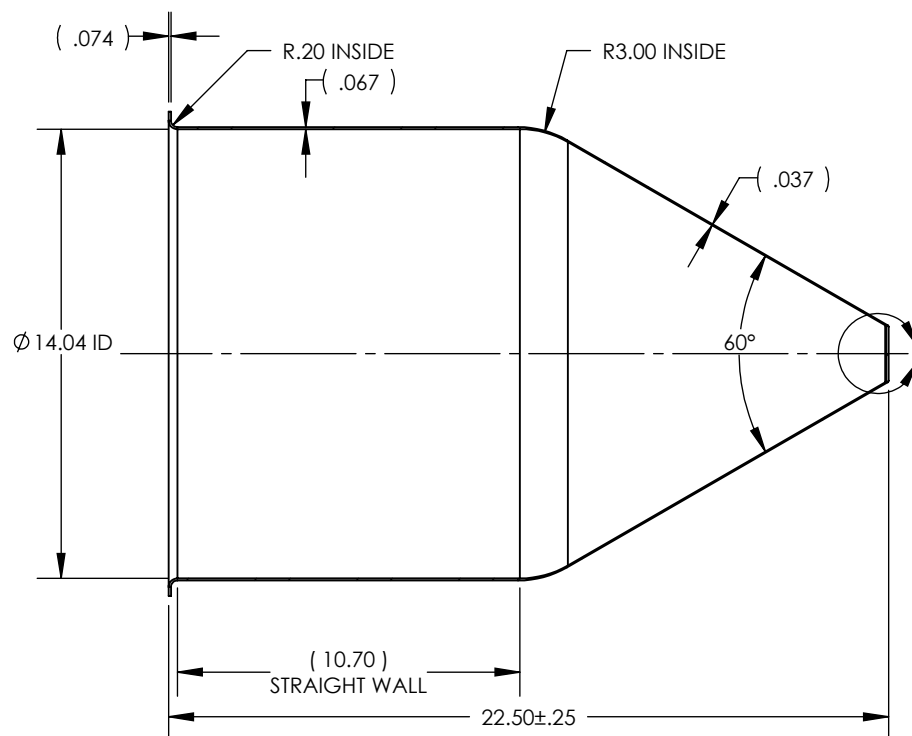
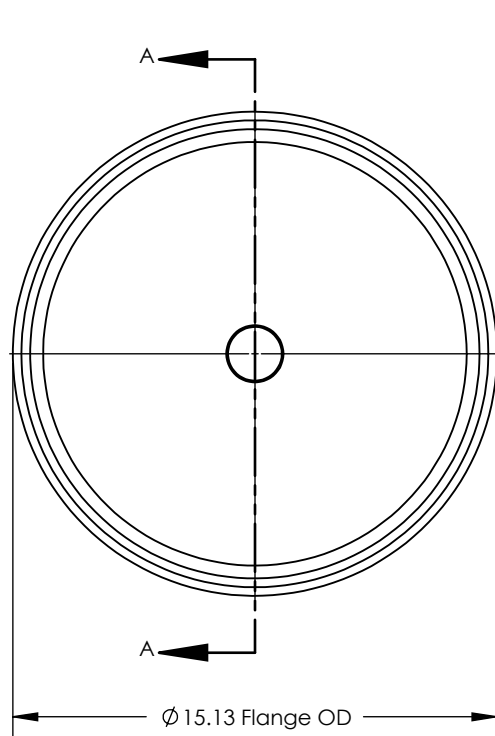


NOTES UNLESS OTHERWISE SPECIFIED

1. PARENT MATERIAL: 304 STAINLESS STEEL, 14 GAUGE (0.075" THICK)
2. FINISH: NO METAL FINISHING REQUIRED. THE FINAL FINISH SHALL BE THE RESULT OF THE PROCESSES USED TO FABRICATE THE SHAPE, RESULTING IN AN ESTIMATED SURFACE ROUGHNESS OF 80 Ra.
3. ESTIMATED INTERNAL VOLUME: 10.63 GALLONS. (2456.66 INCH³)

REVISIONS			
REV.	DESCRIPTION	DATE	APPROVED
00	INITIAL RELEASE FOR MANUFACTURING	14DEC2000	J.KNAPP
01	CHANGED RADIUS FROM 0.63" TO 0.75", CHANGED ID FROM 14.06" TO 14.00"	22JAN2010	L.FERNANDEZ
02	CHANGED FLAT FROM 1.85" TO 1.68", CHANGED OVERALL HEIGHT FROM 22.60" TO 22.50".	05APR2012	L.FERNANDEZ
A	UPDATED SHEET FORMAT, CORRECTED TITLE BLOCK AND REVISION BLOCK AUTHOR INFORMATION, CHANGED RADIUS FROM 0.75" TO 3.00", CORRECTED STRAIGHT WALL DIMENSION CALLOUT, CHANGED TITLE FROM 12" STRAIGHT WALL TO 11", ADDED 0.10" TOLERANCE TO FLAT DIMENSION.	19FEB2016	R.DAVIS
B	CHANGED ID FROM 14.00" TO 14.07"	17MAR2017	R.DAVIS
C	UPDATED DRAWING TO CURRENT FORMAT	16JUL2020	K.DRUMHILLER



ISOMETRIC VIEW
SCALE 1 : 12

SECTION A-A

UNLESS OTHERWISE SPECIFIED: 1. DO NOT SCALE DRAWING 2. DIMENSIONS ARE IN INCHES 3. TOLERANCE: FRACTIONAL ± .25 X.X ±.1 X.XX ±.03 X.XXX ±.010 ANGULAR: ±2 DEG. 4. INTERPRET DRAWING PER ASME-Y14.5M-1994 STANDARDS 5. THIRD ANGLE PROJECTION 6. REMOVE BURRS & BREAK ALL SHARP EDGES WITH R.03 ±.02		NAME	DATE	TITLE: 14" HOPPER WITH 11" STRAIGHT WALL			
	DRAWN	J.KNAPP	14DEC2000				
		<u>PROPRIETARY AND CONFIDENTIAL</u>			SIZE	DRAWING NUMBER	REV
		THE INFORMATION CONTAINED WITHIN THIS DRAWING IS THE SOLE PROPERTY OF TOLEDO METAL SPINNING COMPANY. ANY REPRODUCTION IN PART OR AS A WHOLE WITHOUT WRITTEN PERMISSION OF TOLEDO METAL SPINNING COMPANY IS PROHIBITED.			A	TMS141214	C
	SCALE: 1:6		WEIGHT: 13.77		SHEET 1 OF 1		