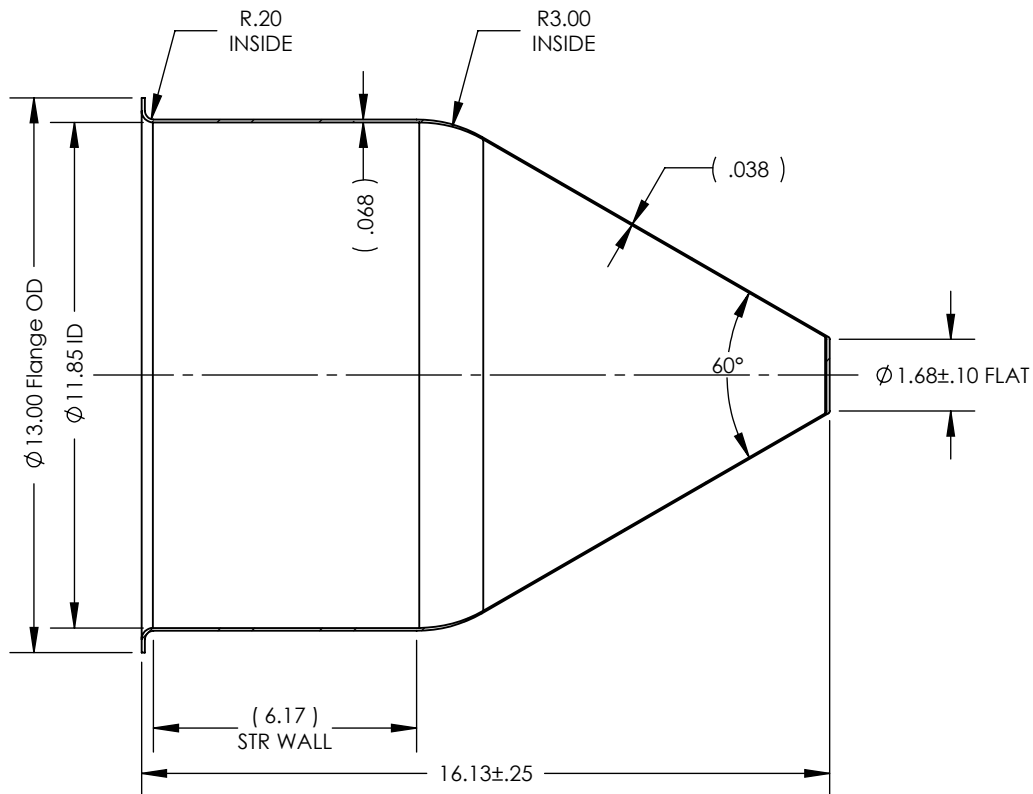
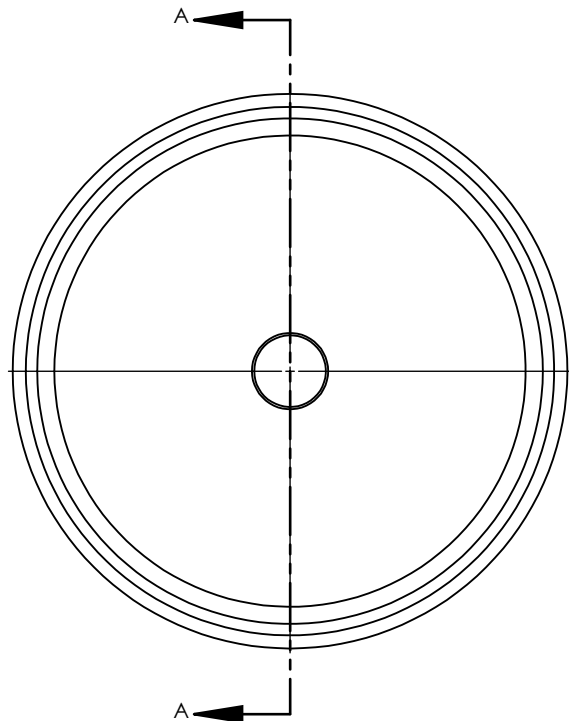


NOTES UNLESS OTHERWISE SPECIFIED

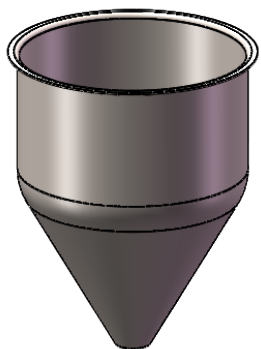
1. PARENT MATERIAL: 316 STAINLESS STEEL, 14 GAUGE (0.075" THICK)
2. PART IS SEAMLESS, FORMED FROM SHEET METAL WITHOUT WELDS.
3. FINISH: NO METAL FINISHING REQUIRED. THE FINAL FINISH SHALL BE THE RESULT OF THE PROCESSES USED TO FABRICATE THE SHAPE, RESULTING IN AN ESTIMATED SURFACE ROUGHNESS OF 80 Ra.
4. ESTIMATED INTERNAL VOLUME: 4.98 GALLONS. (1150.72 INCH³).

REVISIONS

REV.	DESCRIPTION	DATE	APPROVED
A	INITIAL RELEASE FOR MANUFACTURING	MAR2019	R.DAVIS



SECTION A-A



SCALE 1 : 10

UNLESS OTHERWISE SPECIFIED:
 1. DO NOT SCALE DRAWING
 2. DIMENSIONS ARE IN INCHES
 3. TOLERANCE:
 FRACTIONAL $\pm .25$
 X.X $\pm .1$
 X.XX $\pm .03$
 X.XXX $\pm .010$
 ANGULAR: ± 2 DEG.
 4. INTERPRET DRAWING PER
 ASME-Y14.5M-1994 STANDARDS
 5. THIRD ANGLE PROJECTION
 6. REMOVE BURRS & BREAK ALL
 SHARP EDGES WITH R0.03 $\pm .02$

NAME	DATE
R.DAVIS	MAR2019
CHECKED	
ENG APPR.	
MFG APPR.	
Q.A.	

PROPRIETARY AND CONFIDENTIAL

THE INFORMATION CONTAINED WITHIN THIS DRAWING IS THE SOLE PROPERTY OF TOLEDO METAL SPINNING COMPANY. ANY REPRODUCTION IN PART OR AS A WHOLE WITHOUT WRITTEN PERMISSION OF TOLEDO METAL SPINNING COMPANY IS PROHIBITED.

TITLE:

12" HOPPER WITH 6" STRAIGHT WALL

SIZE
ADRAWING NUMBER
TMS12714-316SSREV
A

SCALE: 1:4.5

WEIGHT: 8.09

SHEET 1 OF 1