

4

3

2

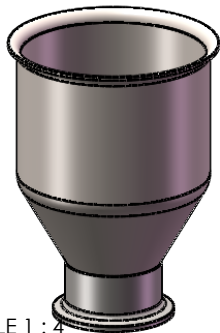
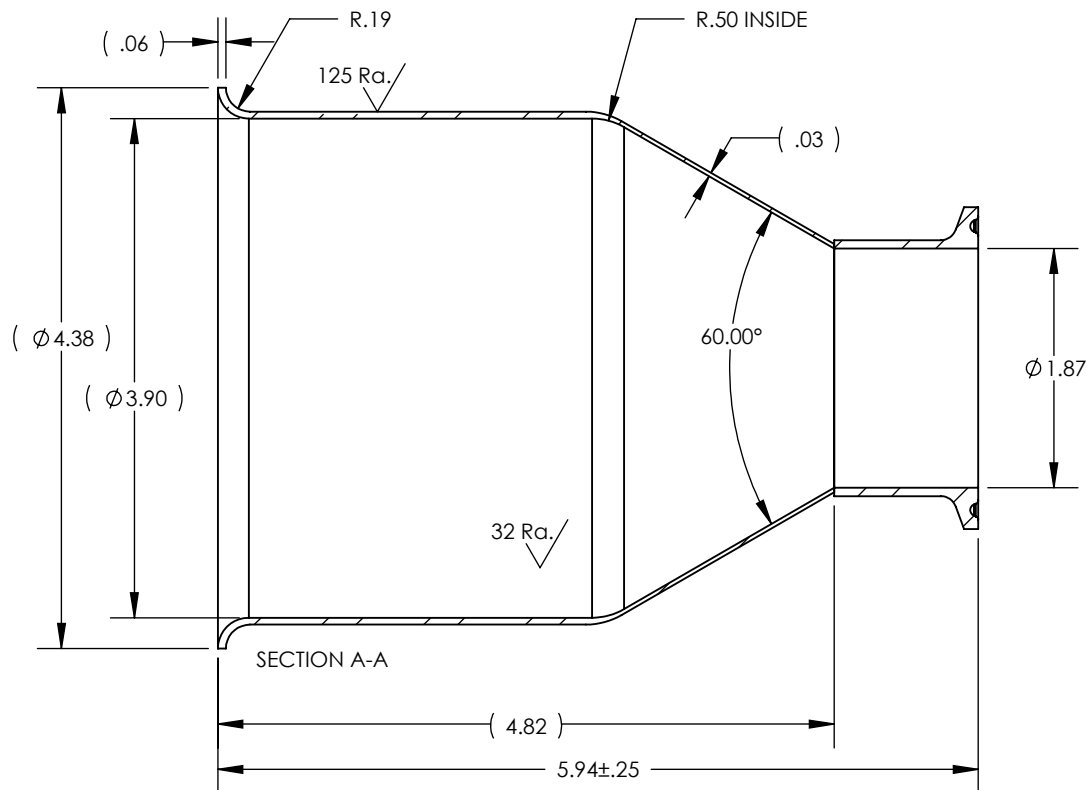
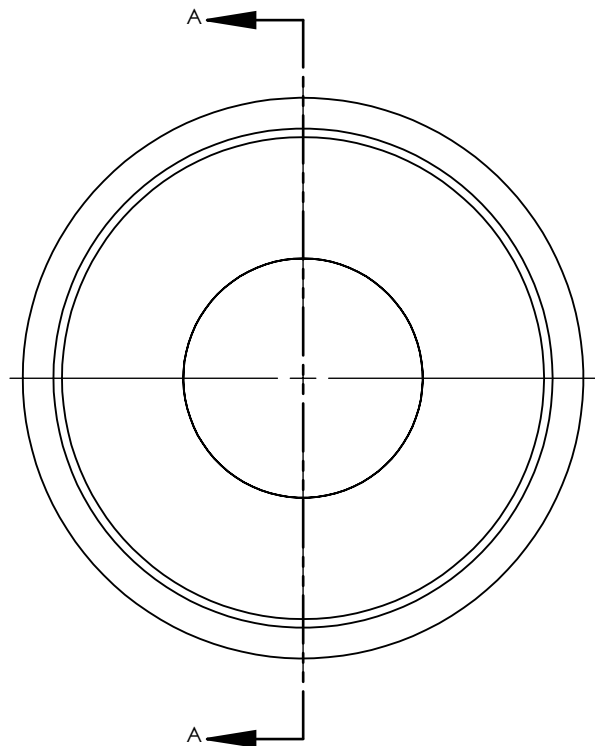
1

**NOTES UNLESS OTHERWISE SPECIFIED**

1. PARENT MATERIAL: 316 STAINLESS STEEL, 16 GAUGE (0.060" THICK)
2. WELD REQUIREMENTS: MINIMIZE WELD POROSITY AND BE VISUALLY FREE OF CRACKS.
3. FINISH: 32Ra. BRUSHED FINISH INSIDE, 125Ra. BRUSHED FINISH OUTSIDE
4. PARENT HOPPER: TMS4316-316SS

**REVISIONS**

REV.	DESCRIPTION	DATE	APPROVED
A	INITIAL RELEASE FOR MANUFACTURING	14MAY2020	K.SCRIVENER



SCALE 1 : 4

UNLESS OTHERWISE SPECIFIED:  
 1. DO NOT SCALE DRAWING  
 2. DIMENSIONS ARE IN INCHES  
 3. TOLERANCE:  
 FRACTIONAL  $\pm .25$   
 X.X  $\pm .1$   
 X.XX  $\pm .03$   
 X.XXX  $\pm .010$   
 ANGULAR:  $\pm 2$  DEG.  
 4. INTERPRET DRAWING PER  
 ASME-Y14.5M-1994 STANDARDS  
 5. THIRD ANGLE PROJECTION  
 6. REMOVE BURRS & BREAK ALL  
 SHARP EDGES WITH R0.03  $\pm .02$

	NAME	DATE
DRAWN	K.SCRIVENER	14MAY2020
CHECKED		
ENG APPR.		
MFG APPR.		
Q.A.		

**PROPRIETARY AND CONFIDENTIAL**

THE INFORMATION CONTAINED WITHIN THIS  
 DRAWING IS THE SOLE PROPERTY OF  
 TOLEDO METAL SPINNING COMPANY. ANY  
 REPRODUCTION IN PART OR AS A WHOLE  
 WITHOUT WRITTEN PERMISSION OF TOLEDO  
 METAL SPINNING COMPANY IS PROHIBITED.

TITLE:

316SS 4.0" ID SANITARY HOPPER WITH 2"  
 FERRULE

SIZE	DRAWING NUMBER	REV
A	107000	A
SCALE: 1:1.5	WEIGHT: 0.98	SHEET 1 OF 1