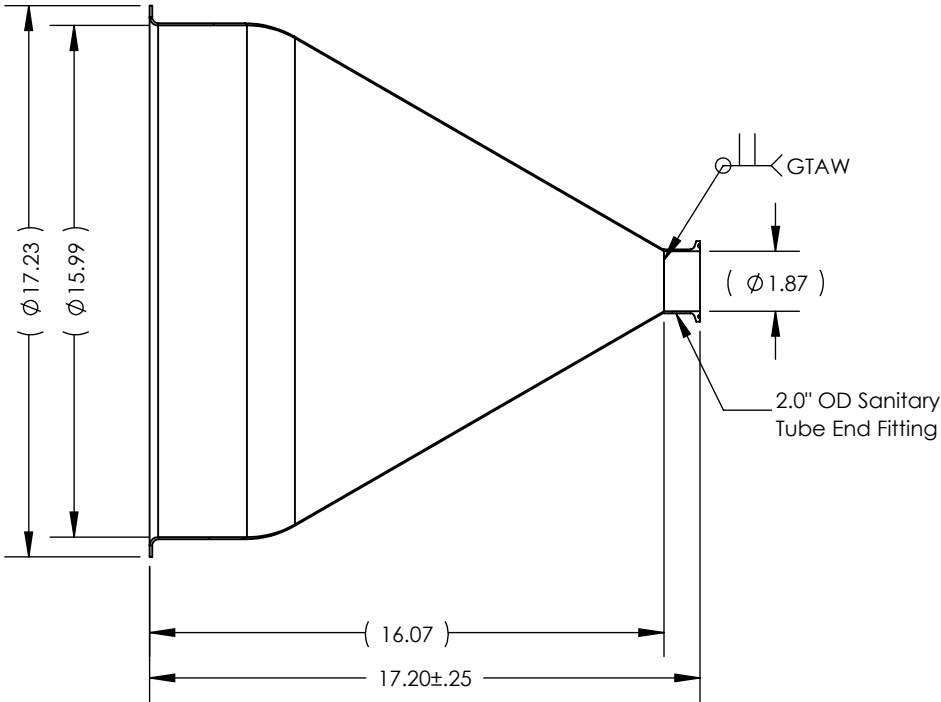
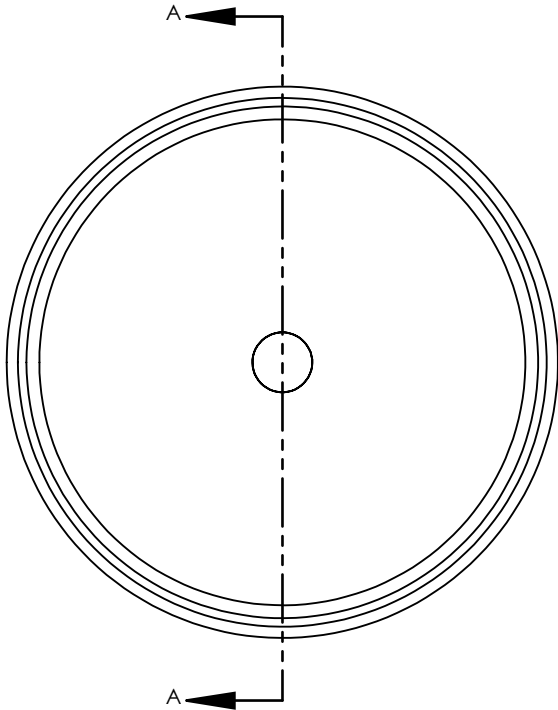


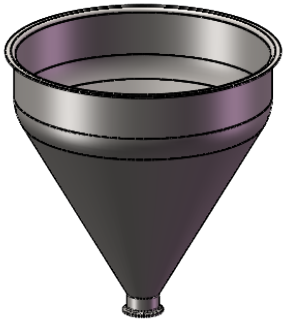
NOTES UNLESS OTHERWISE SPECIFIED

- 1. WELD REQUIREMENTS: MINIMIZED WELD POROSITY AND BE VISUALLY FREE OF CRACKS. WELDS ARE NOT CERTIFIED, TMS ASSUMES NO LIABILITY FOR THE DESIGN REGARDLESS OF ITS USE AND OR METHOD OF INSTALLATION.
- 2. INSIDE BRUSHED FINISH TO 32 Ra.
- 3. OUTSIDE BRUSHED FINISH TO 125 Ra.
- 4. PARENT HOPPER: TMS16314.

REVISIONS			
REV.	DESCRIPTION	DATE	APPROVED
A	INITIAL RELEASE FOR MANUFACTURING	MAR2019	R.DAVIS



SECTION A-A



SCALE 1 : 12

UNLESS OTHERWISE SPECIFIED: 1. DO NOT SCALE DRAWING 2. DIMENSIONS ARE IN INCHES 3. TOLERANCE: FRACTIONAL ± .25 X.X ±.1 X.XX ±.03 X.XXX ±.010 ANGULAR: ±2 DEG. 4. INTERPRET DRAWING PER ASME-Y14.5M-1994 STANDARDS 5. THIRD ANGLE PROJECTION 6. REMOVE BURRS & BREAK ALL SHARP EDGES WITH R0.03 ±.02			NAME	DATE	TITLE: HOPPER WITH WELDED 2.0" TUBE FITTING		
	DRAWN		R.DAVIS	MAR2019			
	CHECKED						
	ENG APPR.						
	MFG APPR.						
	Q.A.				SIZE A DRAWING NUMBER 106008 REV A		
	<u>PROPRIETARY AND CONFIDENTIAL</u>						
	THE INFORMATION CONTAINED WITHIN THIS DRAWING IS THE SOLE PROPERTY OF TOLEDO METAL SPINNING COMPANY. ANY REPRODUCTION IN PART OR AS A WHOLE WITHOUT WRITTEN PERMISSION OF TOLEDO METAL SPINNING COMPANY IS PROHIBITED.						
		SCALE: 1:6		WEIGHT: 8.81		SHEET 1 OF 1	