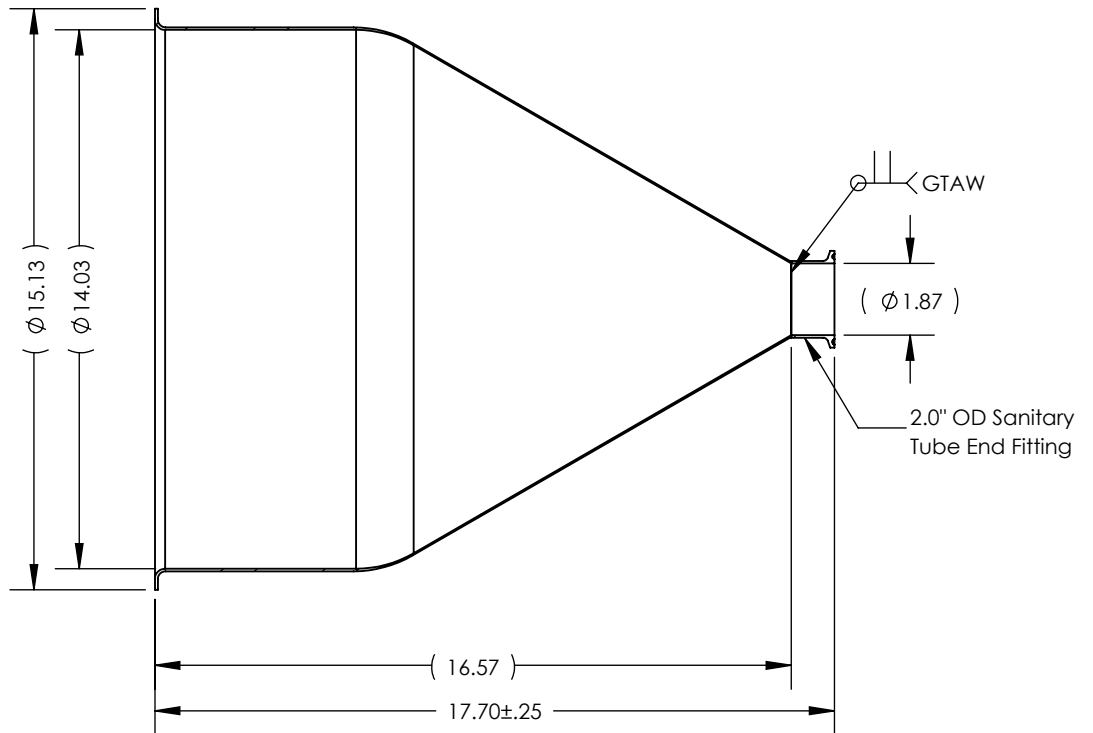
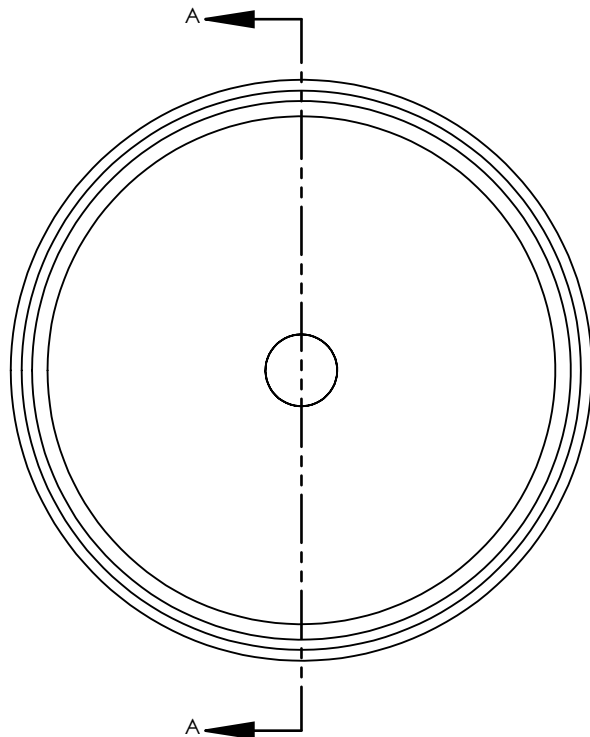


NOTES UNLESS OTHERWISE SPECIFIED

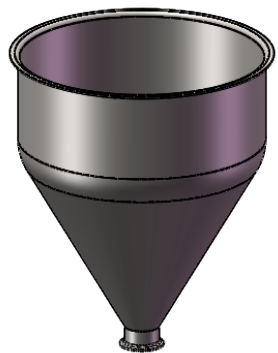
1. WELD REQUIREMENTS: MINIMIZED WELD POROSITY AND BE VISUALLY FREE OF CRACKS. WELDS ARE NOT CERTIFIED, TMS ASSUMES NO LIABILITY FOR THE DESIGN REGARDLESS OF ITS USE AND OR METHOD OF INSTALLATION.
2. INSIDE BRUSHED FINISH TO 32 Ra.
3. OUTSIDE BRUSHED FINISH TO 125 Ra.
4. PARENT HOPPER: TMS14514.

REVISIONS

REV.	DESCRIPTION	DATE	APPROVED
A	INITIAL RELEASE FOR MANUFACTURING	MAR2019	R.DAVIS



SECTION A-A



SCALE 1 : 11

UNLESS OTHERWISE SPECIFIED:
1. DO NOT SCALE DRAWING
2. DIMENSIONS ARE IN INCHES
3. TOLERANCE:
FRACTIONAL $\pm .25$
X.X $\pm .1$
X.XX $\pm .03$
X.XXX $\pm .010$
ANGULAR: ± 2 DEG.
4. INTERPRET DRAWING PER
ASME-Y14.5M-1994 STANDARDS
5. THIRD ANGLE PROJECTION
6. REMOVE BURRS & BREAK ALL
SHARP EDGES WITH $R0.03 \pm .02$

	NAME	DATE
DRAWN	R.DAVIS	MAR2019
CHECKED		
ENG APPR.		
MFG APPR.		
Q.A.		

PROPRIETARY AND CONFIDENTIAL
THE INFORMATION CONTAINED WITHIN THIS
DRAWING IS THE SOLE PROPERTY OF
TOLEDO METAL SPINNING COMPANY. ANY
REPRODUCTION IN PART OR AS A WHOLE
WITHOUT WRITTEN PERMISSION OF TOLEDO
METAL SPINNING COMPANY IS PROHIBITED.

TITLE:

HOPPER WITH WELDED 2.0" TUBE FITTING

SIZE	DRAWING NUMBER	REV
A	106006	A
SCALE: 1:5		WEIGHT: 9.11
		SHEET 1 OF 1