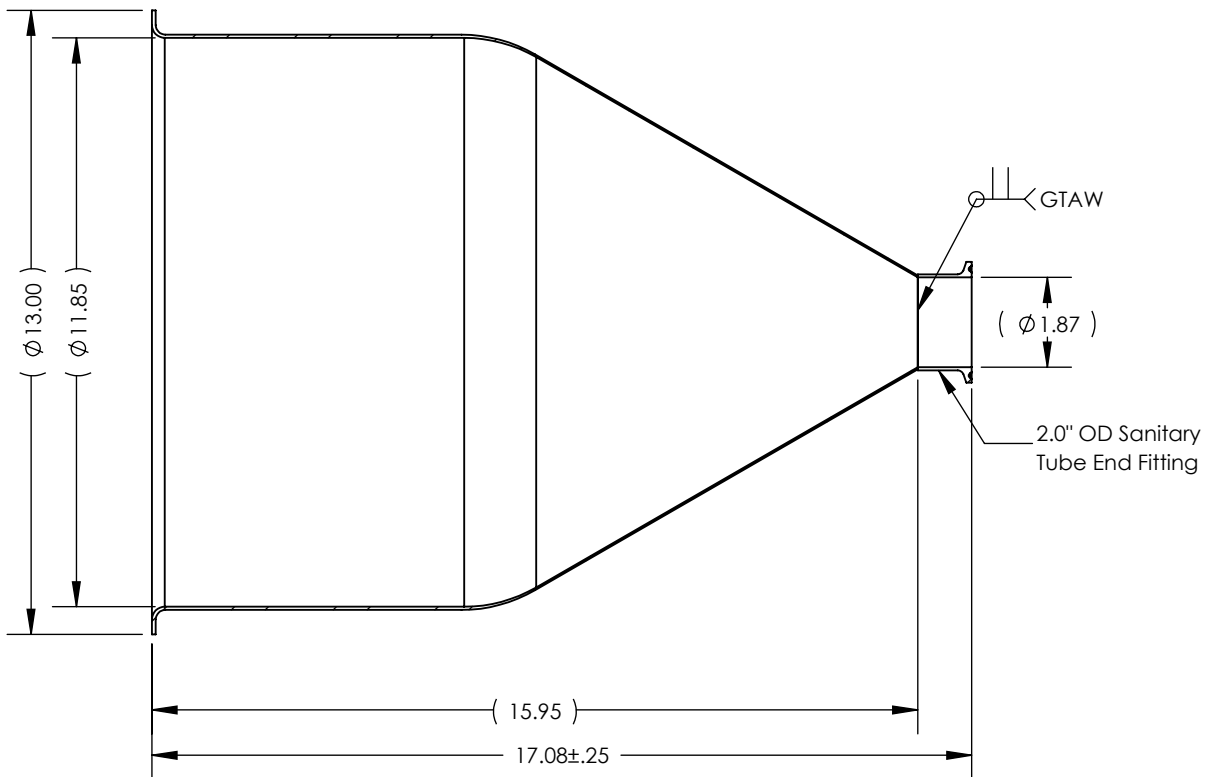
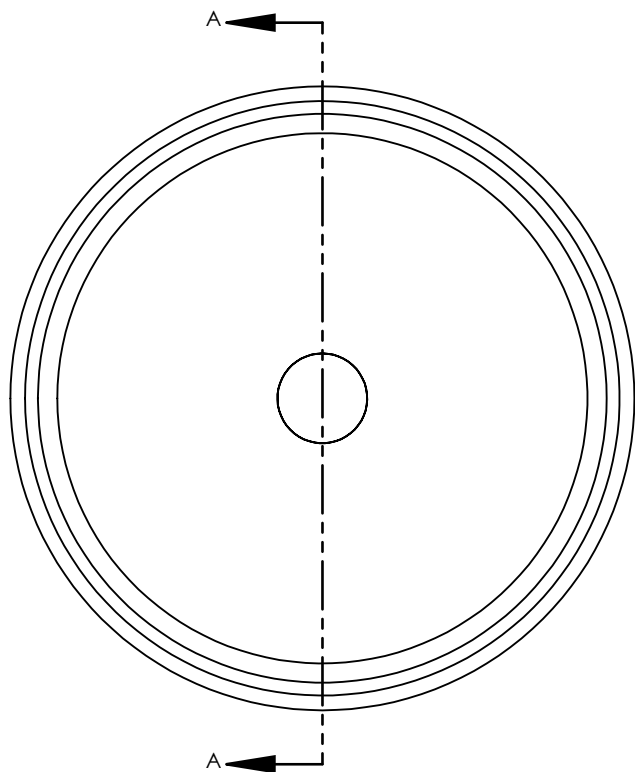


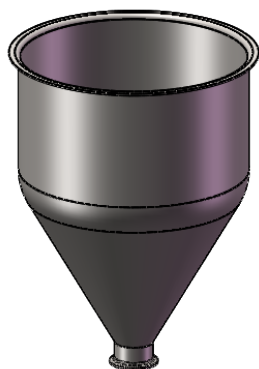
NOTES UNLESS OTHERWISE SPECIFIED

1. WELD REQUIREMENTS: MINIMIZED WELD POROSITY AND BE VISUALLY FREE OF CRACKS. WELDS ARE NOT CERTIFIED, TMS ASSUMES NO LIABILITY FOR THE DESIGN REGARDLESS OF ITS USE AND OR METHOD OF INSTALLATION.
2. INSIDE BRUSHED FINISH TO 32 Ra.
3. OUTSIDE BRUSHED FINISH TO 125 Ra.
4. PARENT HOPPER: TMS12714.

| REVISIONS | | | |
|-----------|-----------------------------------|---------|----------|
| REV. | DESCRIPTION | DATE | APPROVED |
| A | INITIAL RELEASE FOR MANUFACTURING | MAR2019 | R.DAVIS |



SECTION A-A



SCALE 1 : 10

UNLESS OTHERWISE SPECIFIED:
 1. DO NOT SCALE DRAWING
 2. DIMENSIONS ARE IN INCHES
 3. TOLERANCE:
 FRACTIONAL ± .25
 X.X ±.1
 X.XX ±.03
 X.XXX ±.010
 ANGULAR: ±2 DEG.
 4. INTERPRET DRAWING PER
 ASME-Y14.5M-1994 STANDARDS
 5. THIRD ANGLE PROJECTION
 6. REMOVE BURRS & BREAK ALL
 SHARP EDGES WITH R0.03 ±.02

| | NAME | DATE |
|-----------|---------|---------|
| DRAWN | R.DAVIS | MAR2019 |
| CHECKED | | |
| ENG APPR. | | |
| MFG APPR. | | |
| Q.A. | | |

PROPRIETARY AND CONFIDENTIAL
 THE INFORMATION CONTAINED WITHIN THIS
 DRAWING IS THE SOLE PROPERTY OF
 TOLEDO METAL SPINNING COMPANY. ANY
 REPRODUCTION IN PART OR AS A WHOLE
 WITHOUT WRITTEN PERMISSION OF TOLEDO
 METAL SPINNING COMPANY IS PROHIBITED.

TITLE:

HOPPER WITH WELDED 2.0" TUBE FITTING

| SIZE | DRAWING NUMBER | REV |
|------------|----------------|--------------|
| A | 106004 | A |
| SCALE: 1:4 | | WEIGHT: 8.23 |
| | | SHEET 1 OF 1 |