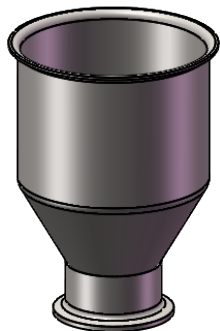
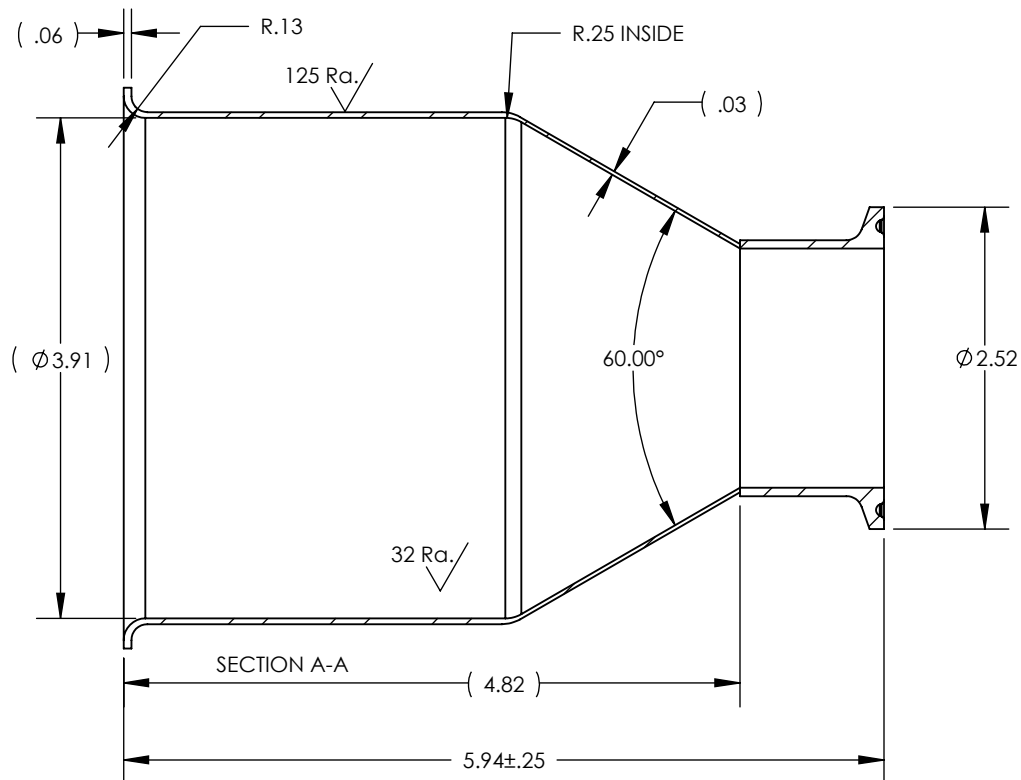
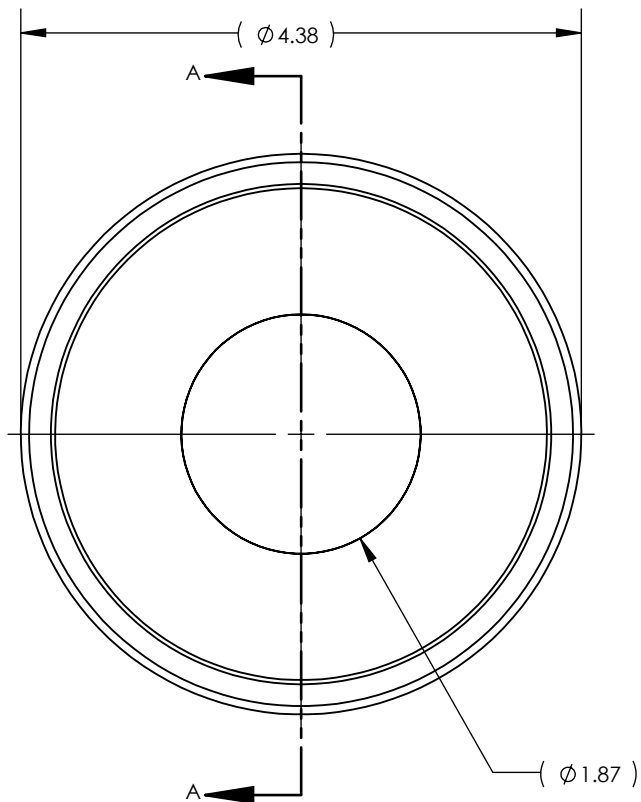


NOTES UNLESS OTHERWISE SPECIFIED

1. PARENT MATERIAL: 304 STAINLESS STEEL, 16 GAUGE (0.060" THICK)
2. WELD REQUIREMENTS: MINIMIZE WELD POROSITY AND BE VISUALLY FREE OF CRACKS.
3. FINISH: 32Ra. BRUSHED FINISH INSIDE, 125 Ra. BRUSHED FINISH OUTSIDE
4. PARENT HOPPER: TMS4316



SCALE 1 : 4

UNLESS OTHERWISE SPECIFIED:
 1. DO NOT SCALE DRAWING
 2. DIMENSIONS ARE IN INCHES
 3. TOLERANCE:
 FRACTIONAL ± .25
 X.X ±.1
 X.XX ±.03
 X.XXX ±.010
 ANGULAR: ±2 DEG.
 4. INTERPRET DRAWING PER
 ASME-Y14.5M-1994 STANDARDS
 5. THIRD ANGLE PROJECTION
 6. REMOVE BURRS & BREAK ALL
 SHARP EDGES WITH R0.03 ±.02

NAME	DATE
K.SCRIVENER	14MAY2020

PROPRIETARY AND CONFIDENTIAL
 THE INFORMATION CONTAINED WITHIN THIS
 DRAWING IS THE SOLE PROPERTY OF
 TOLEDO METAL SPINNING COMPANY. ANY
 REPRODUCTION IN PART OR AS A WHOLE
 WITHOUT WRITTEN PERMISSION OF TOLEDO
 METAL SPINNING COMPANY IS PROHIBITED.

TITLE:

304SS 4.0" ID SANITARY HOPPER WITH 2"
 FERRULE

SIZE
 A

DRAWING NUMBER
106000

REV
 B

SCALE: 1:1.5

WEIGHT: 0.89

SHEET 1 OF 1