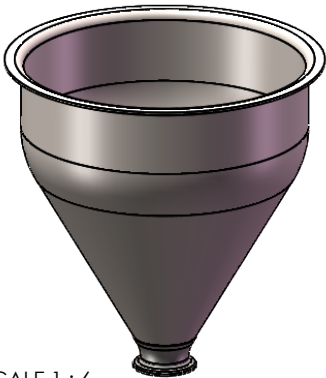
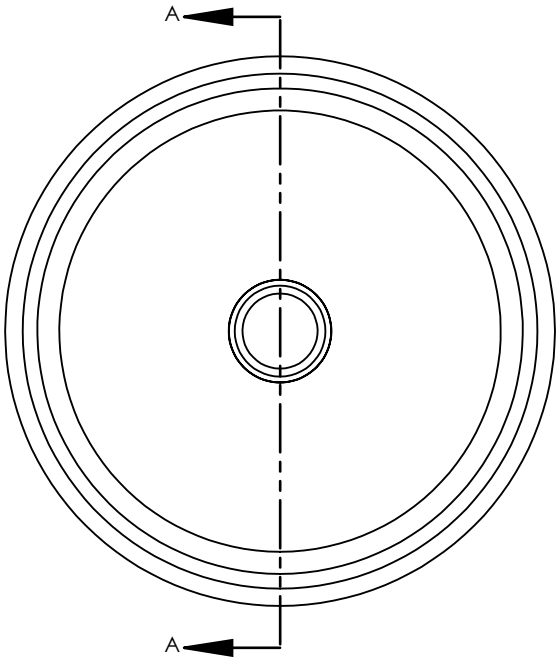


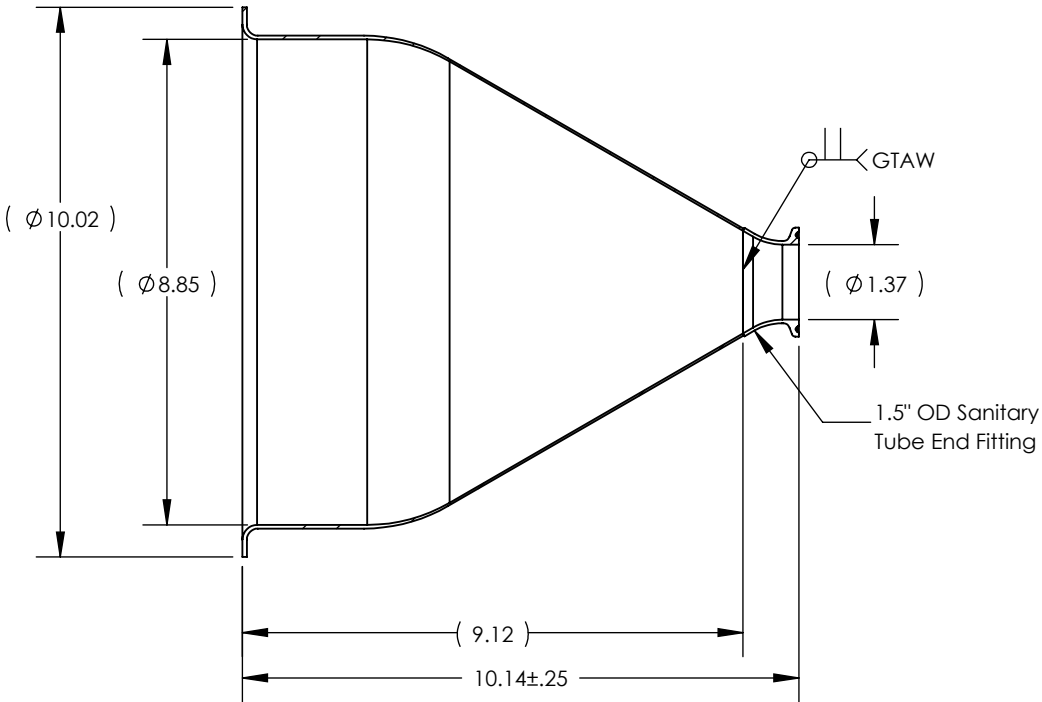
NOTES UNLESS OTHERWISE SPECIFIED

- 1. PARENT MATERIAL: 316 STAINLESS STEEL, 14 GAUGE (0.075" THICK)
- 2. WELD REQUIREMENTS: MINIMIZED WELD POROSITY AND BE VISUALLY FREE OF CRACKS. WELDS ARE NOT CERTIFIED, TMS ASSUMES NO LIABILITY FOR THE DESIGN REGARDLESS OF ITS USE AND OR METHOD OF INSTALLATION.
- 3. INSIDE BRUSHED FINISH TO 32 Ra.
- 4. OUTSIDE BRUSHED FINISH TO 125 Ra.
- 5. PARENT HOPPER: TMS9314-316SS.

REVISIONS			
REV.	DESCRIPTION	DATE	APPROVED
A	INITIAL RELEASE FOR MANUFACTURING	MAR2019	R.DAVIS
B	UPDATED TO CURRENT DRAWING	8/12/2020	K. DRUMHILLER



SCALE 1 : 6



SECTION A-A

UNLESS OTHERWISE SPECIFIED: 1. DO NOT SCALE DRAWING 2. DIMENSIONS ARE IN INCHES 3. TOLERANCE: FRACTIONAL ± .25 X.X ±.1 X.XX ±.03 X.XXX ±.010 ANGULAR: ±2 DEG. 4. INTERPRET DRAWING PER ASME-Y14.5M-1994 STANDARDS 5. THIRD ANGLE PROJECTION 6. REMOVE BURRS & BREAK ALL SHARP EDGES WITH R0.03 ±.02		NAME	DATE	TITLE:  HOPPER WITH WELDED 1.5" TUBE FITTING			
	DRAWN	R.DAVIS	MAR2019				
		<u>PROPRIETARY AND CONFIDENTIAL</u>			THE INFORMATION CONTAINED WITHIN THIS DRAWING IS THE SOLE PROPERTY OF TOLEDO METAL SPINNING COMPANY. ANY REPRODUCTION IN PART OR AS A WHOLE WITHOUT WRITTEN PERMISSION OF TOLEDO METAL SPINNING COMPANY IS PROHIBITED.		
		SIZE	DRAWING NUMBER			REV	
		A	105002			B	
	SCALE: 1:3.5		WEIGHT: 3.38		SHEET 1 OF 1		