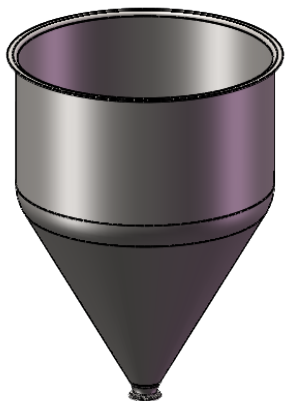
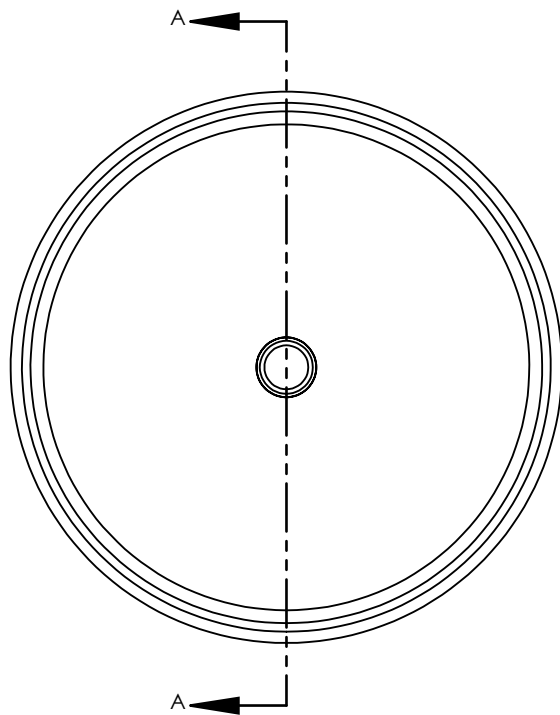


NOTES UNLESS OTHERWISE SPECIFIED

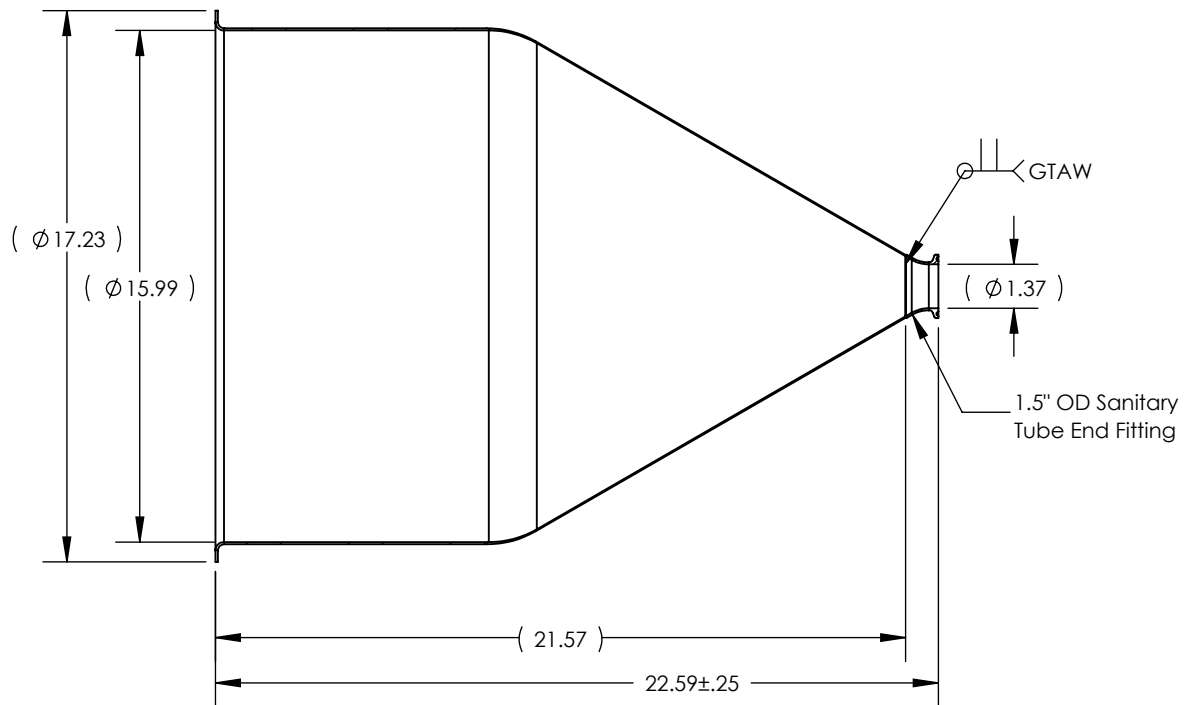
1. PARENT MATERIAL: 304 STAINLESS STEEL, 14 GAUGE (0.075" THICK)
2. WELD REQUIREMENTS: MINIMIZED WELD POROSITY AND BE VISUALLY FREE OF CRACKS. WELDS ARE NOT CERTIFIED, TMS ASSUMES NO LIABILITY FOR THE DESIGN REGARDLESS OF ITS USE AND OR METHOD OF INSTALLATION.
3. INSIDE BRUSHED FINISH TO 32 Ra.
4. OUTSIDE BRUSHED FINISH TO 125 Ra.
5. PARENT HOPPER: TMS16914.

REVISIONS

REV.	DESCRIPTION	DATE	APPROVED
A	INITIAL RELEASE FOR MANUFACTURING	MAR2019	R.DAVIS
B	UPDATED DRAWING TO CURRENT FORMAT	8/4/2020	K.DRUMHILLER



SCALE 1 : 12



SECTION A-A

UNLESS OTHERWISE SPECIFIED:
 1. DO NOT SCALE DRAWING
 2. DIMENSIONS ARE IN INCHES
 3. TOLERANCE:
 FRACTIONAL ± .25
 X.X ± .1
 X.XX ± .03
 X.XXX ± .010
 ANGULAR: ± 2 DEG.
 4. INTERPRET DRAWING PER ASME-Y14.5M-1994 STANDARDS
 5. THIRD ANGLE PROJECTION
 6. REMOVE BURRS & BREAK ALL SHARP EDGES WITH R0.03 ± .02

DRAWN	NAME	DATE
	R.DAVIS	MAR2019
PROPRIETARY AND CONFIDENTIAL		
THE INFORMATION CONTAINED WITHIN THIS DRAWING IS THE SOLE PROPERTY OF TOLEDO METAL SPINNING COMPANY. ANY REPRODUCTION IN PART OR AS A WHOLE WITHOUT WRITTEN PERMISSION OF TOLEDO METAL SPINNING COMPANY IS PROHIBITED.		

TITLE:

HOPPER WITH WELDED 1.5" TUBE FITTING

SIZE	DRAWING NUMBER	REV
A	104009	B
SCALE: 1:6		WEIGHT: 14.17
		SHEET 1 OF 1