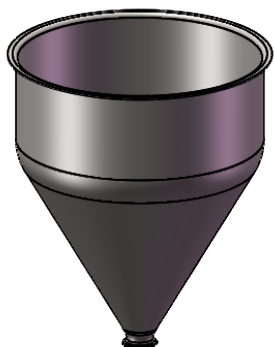
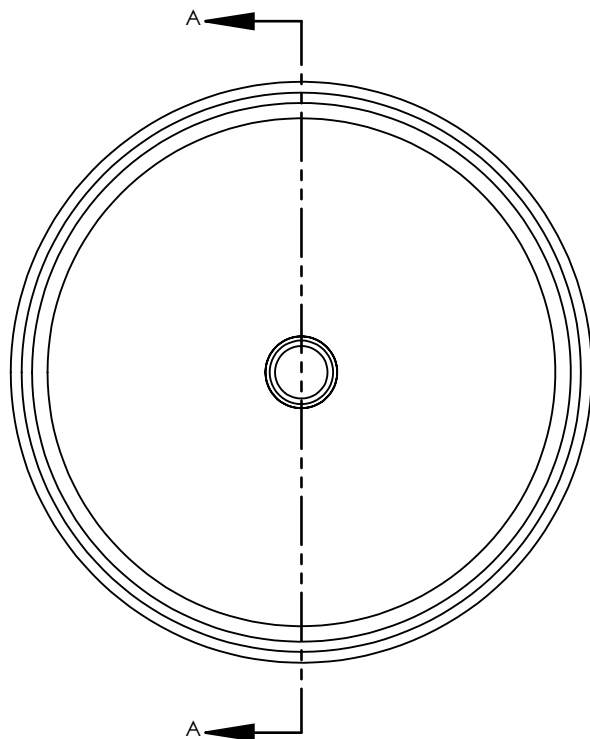


**NOTES UNLESS OTHERWISE SPECIFIED**

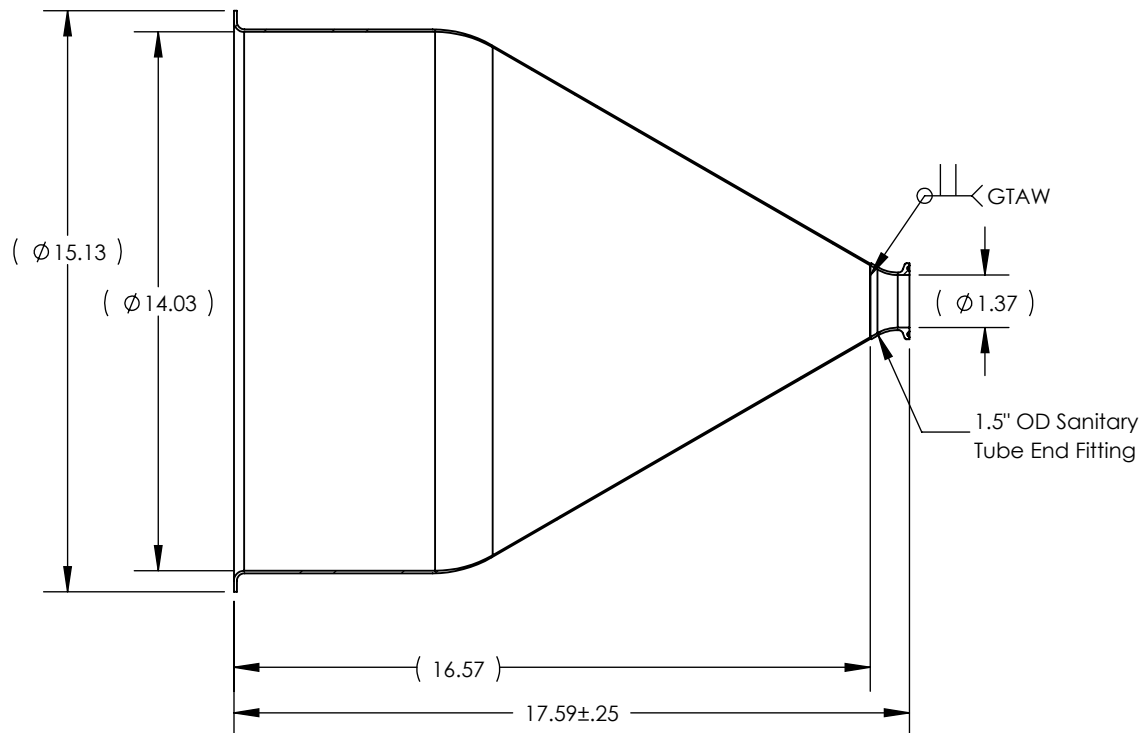
1. PARENT MATERIAL: 304 STAINLESS STEEL, 14 GAUGE (0.075" THICK).
2. WELD REQUIREMENTS: MINIMIZED WELD POROSITY AND BE VISUALLY FREE OF CRACKS. WELDS ARE NOT CERTIFIED, TMS ASSUMES NO LIABILITY FOR THE DESIGN REGARDLESS OF ITS USE AND OR METHOD OF INSTALLATION.
3. INSIDE BRUSHED FINISH TO 32 Ra.
4. OUTSIDE BRUSHED FINISH TO 125 Ra.
5. PARENT HOPPER: TMS14514.

**REVISIONS**

| REV. | DESCRIPTION                       | DATE     | APPROVED     |
|------|-----------------------------------|----------|--------------|
| A    | INITIAL RELEASE FOR MANUFACTURING | MAR2019  | R.DAVIS      |
| B    | UPDATED DRAWING TO CURRENT FORMAT | 8/3/2020 | K.DRUMHILLER |



SCALE 1 : 11



SECTION A-A

UNLESS OTHERWISE SPECIFIED:  
 1. DO NOT SCALE DRAWING  
 2. DIMENSIONS ARE IN INCHES  
 3. TOLERANCE:  
   FRACTIONAL ± .25  
   X.X ±.1  
   X.XX ±.03  
   X.XXX ±.010  
   ANGULAR: ±2 DEG.  
 4. INTERPRET DRAWING PER  
   ASME-Y14.5M-1994 STANDARDS  
 5. THIRD ANGLE PROJECTION  
 6. REMOVE BURRS & BREAK ALL  
   SHARP EDGES WITH R0.03 ±.02

| NAME   | DATE    |
|--|---------|
| R.DAVIS  | MAR2019 |
|  |         |
|  |         |
|  |         |
| <b>PROPRIETARY AND CONFIDENTIAL</b>  |         |
| THE INFORMATION CONTAINED WITHIN THIS DRAWING IS THE SOLE PROPERTY OF TOLEDO METAL SPINNING COMPANY. ANY REPRODUCTION IN PART OR AS A WHOLE WITHOUT WRITTEN PERMISSION OF TOLEDO METAL SPINNING COMPANY IS PROHIBITED. |         |

TITLE:

HOPPER WITH WELDED 1.5" TUBE FITTING

| SIZE       | DRAWING NUMBER | REV          |
|------------|----------------|--------------|
| A          | 104006         | B            |
| SCALE: 1:5 | WEIGHT: 9.05   | SHEET 1 OF 1 |