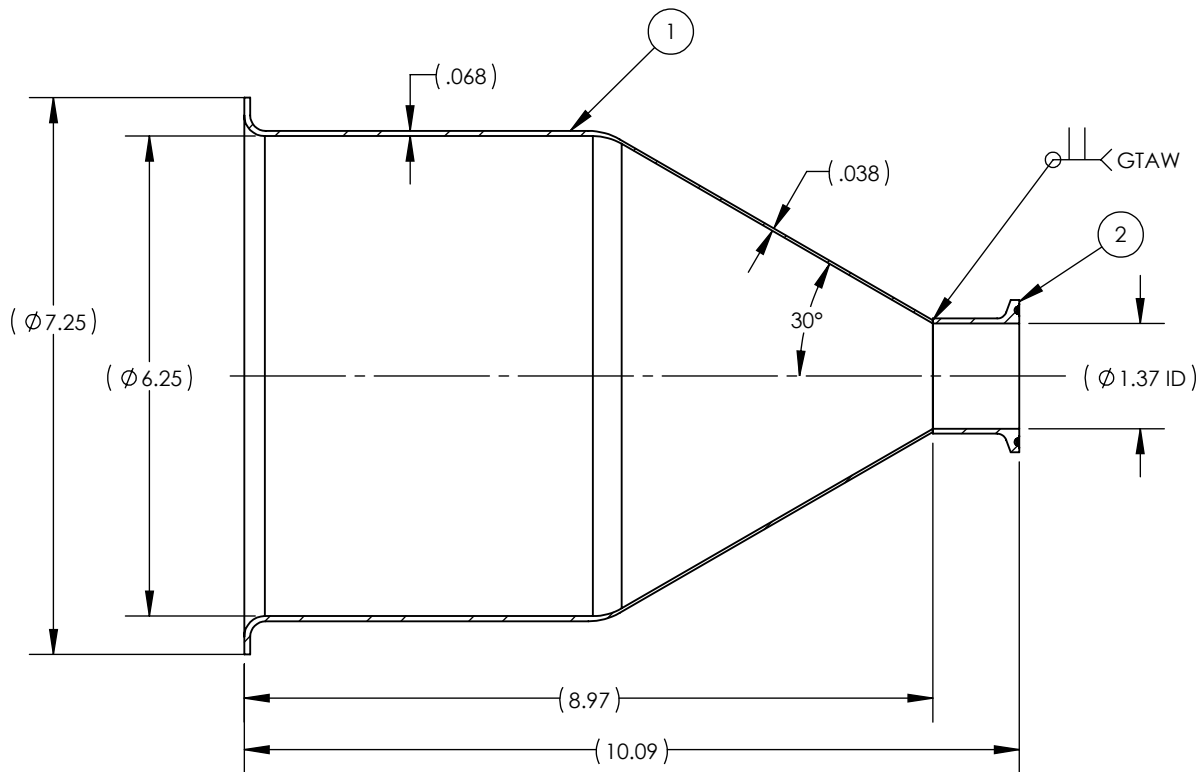
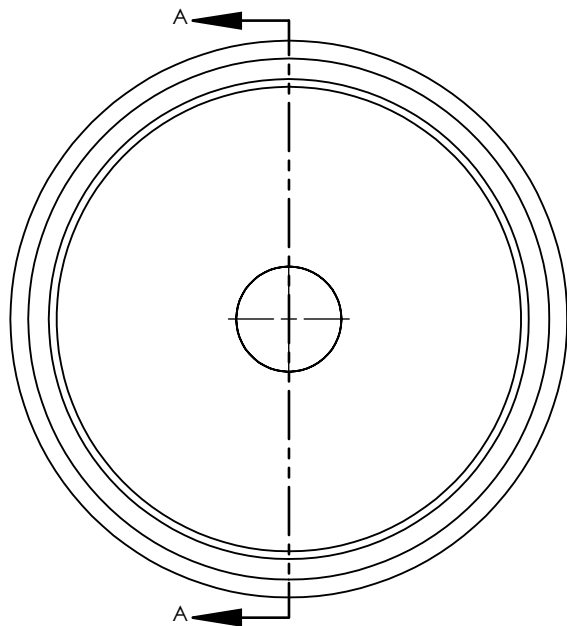
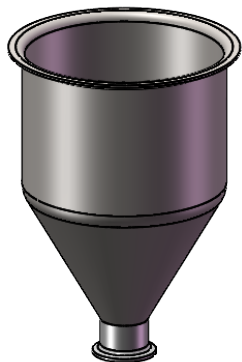


NOTES UNLESS OTHERWISE SPECIFIED

1. PARENT MATERIAL: 304 STAINLESS STEEL, 14 GAUGE (0.075" THICK).
2. WELD REQUIREMENTS: MINIMIZED WELD POROSITY AND BE VISUALLY FREE OF CRACKS. WELDS ARE NOT CERTIFIED, TMS ASSUMES NO LIABILITY FOR THE DESIGN REGARDLESS OF ITS USE AND OR METHOD OF INSTALLATION.
3. INSIDE BRUSHED FINISH TO 32 Ra.
4. OUTSIDE BRUSHED FINISH TO 125 Ra.



SECTION A-A



SCALE 1 : 6

REVISIONS			
REV.	DESCRIPTION	DATE	APPROVED
A	INITIAL RELEASE FOR MANUFACTURING	MAR2019	R.DAVIS
B	UPDATED DRAWING TO CURRENT FORMAT	8/3/2020	K.DRUMHILLER
C	ITEM 2 WAS 4322K162F, 10.09 OAH WAS ±.25, ADDED REF WALL THICKNESS, ADDED ANGLE, ADDED BOM	3/9/2023	M.BODETTE

ITEM NO.	PART NUMBER	DESCRIPTION			QTY.		
1	TMS6414	TMS Stock Item - Hopper			1		
2	4322K162	1.5in x 1.125in OAH 304SS SANITARY TUBE FITTING			1		
UNLESS OTHERWISE SPECIFIED: 1. DO NOT SCALE DRAWING 2. DIMENSIONS ARE IN INCHES 3. TOLERANCE: FRACTIONAL ± .25 X.X ±.1 X.XX ±.03 X.XXX ±.010 ANGULAR: ±2 DEG. 4. INTERPRET DRAWING PER ASME-Y14.5M-1994 STANDARDS 5. THIRD ANGLE PROJECTION 6. REMOVE BURRS & BREAK ALL SHARP EDGES WITH R0.03 ±.02			NAME	DATE	TITLE: HOPPER WITH WELDED 1.5" TUBE FITTING		
		DRAWN	R.DAVIS	MAR2019			
		PROPRIETARY AND CONFIDENTIAL			SIZE A	DRAWING NUMBER 104001 REV C	REV C
		THE INFORMATION CONTAINED WITHIN THIS DRAWING IS THE SOLE PROPERTY OF TOLEDO METAL SPINNING COMPANY. ANY REPRODUCTION IN PART OR AS A WHOLE WITHOUT WRITTEN PERMISSION OF TOLEDO METAL SPINNING COMPANY IS PROHIBITED.					
		SCALE: 1:2.5		WEIGHT: 2.66	SHEET 1 OF 1		