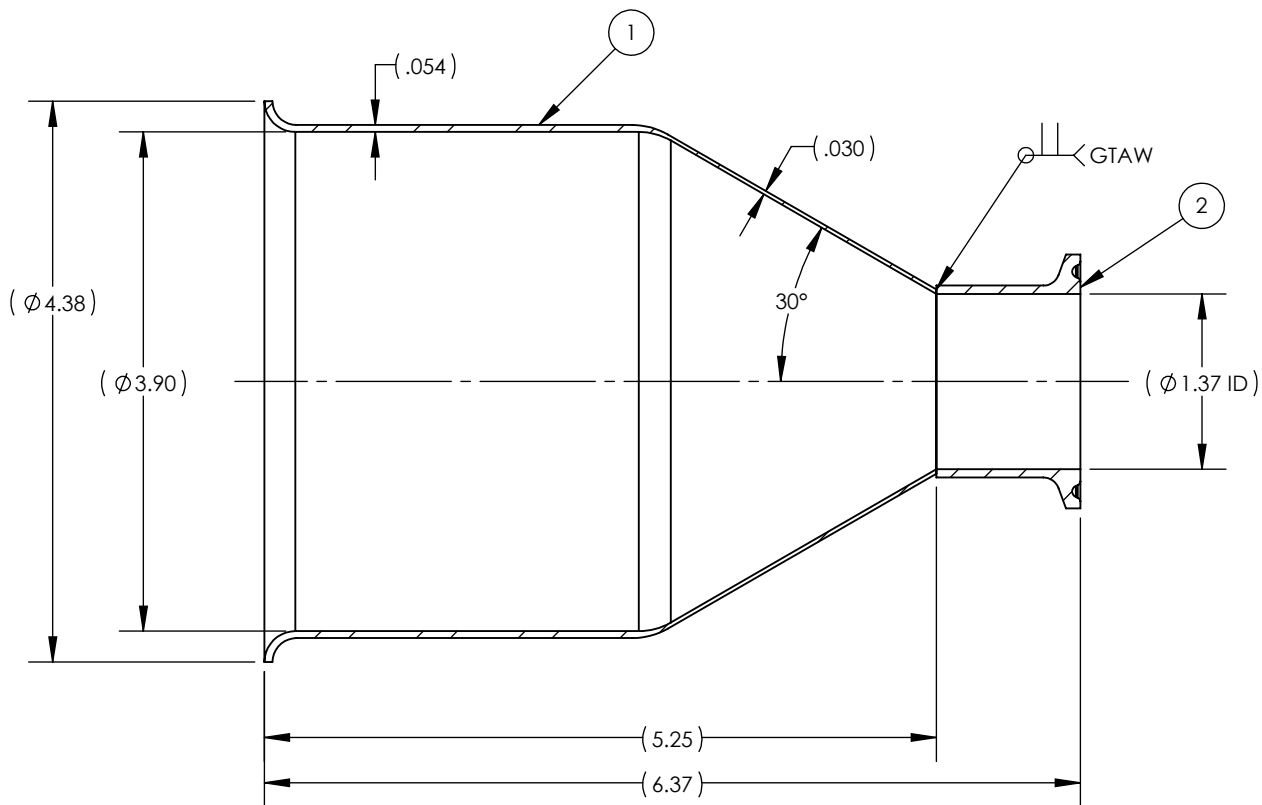
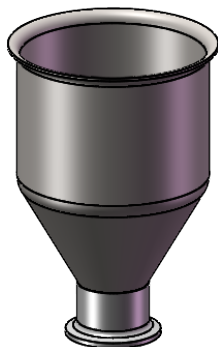


## REVISIONS

- | REV. | DESCRIPTION  | DATE      | APPROVED     |
|------|--|-----------|--------------|
| A    | INITIAL RELEASE FOR MANUFACTURING                                      | MAR2019   | R.DAVIS      |
| B    | UPDATED DRAWING TO CURRENT FORMAT                                      | 7/31/2020 | K.DRUMHILLER |
| C    | ITEM 2 WAS 4322K162F, ADDED REF WALL THICKNESS, ADDED ANGLE, ADDED BOM | 3/9/2023  | M.BODETTE    |



SECTION A-A



SCALE 1 : 4

ITEM NO.	PART NUMBER	DESCRIPTION			QTY.		
1	TMS4316	TMS Stock Item - Hopper			1		
2	4322K162	1.5in x 1.125in OAH 304SS SANITARY TUBE FITTING			1		
UNLESS OTHERWISE SPECIFIED: 1. DO NOT SCALE DRAWING 2. DIMENSIONS ARE IN INCHES 3. TOLERANCE: FRACTIONAL ± .25 X.X     ±.1 X.XX    ±.03 X.XXX   ±.010 ANGULAR: ±2 DEG. 4. INTERPRET DRAWING PER ASME-Y14.5M-1994 STANDARDS 5. THIRD ANGLE PROJECTION 6. REMOVE BURRS & BREAK ALL SHARP EDGES WITH R0.03 ±.02		NAME	DATE	TITLE:  HOPPER WITH WELDED 1.5" TUBE FITTING			
	DRAWN	R.DAVIS	MAR2019				
		PROPRIETARY AND CONFIDENTIAL			THE INFORMATION CONTAINED WITHIN THIS DRAWING IS THE SOLE PROPERTY OF TOLEDO METAL SPINNING COMPANY. ANY REPRODUCTION IN PART OR AS A WHOLE WITHOUT WRITTEN PERMISSION OF TOLEDO METAL SPINNING COMPANY IS PROHIBITED.		
	SIZE	DRAWING NUMBER		REV			
	A	104000		C			
	SCALE: 1:1.5		WEIGHT: 0.82		SHEET 1 OF 1		