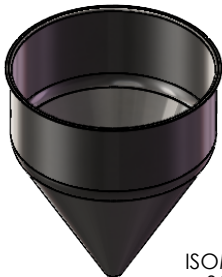
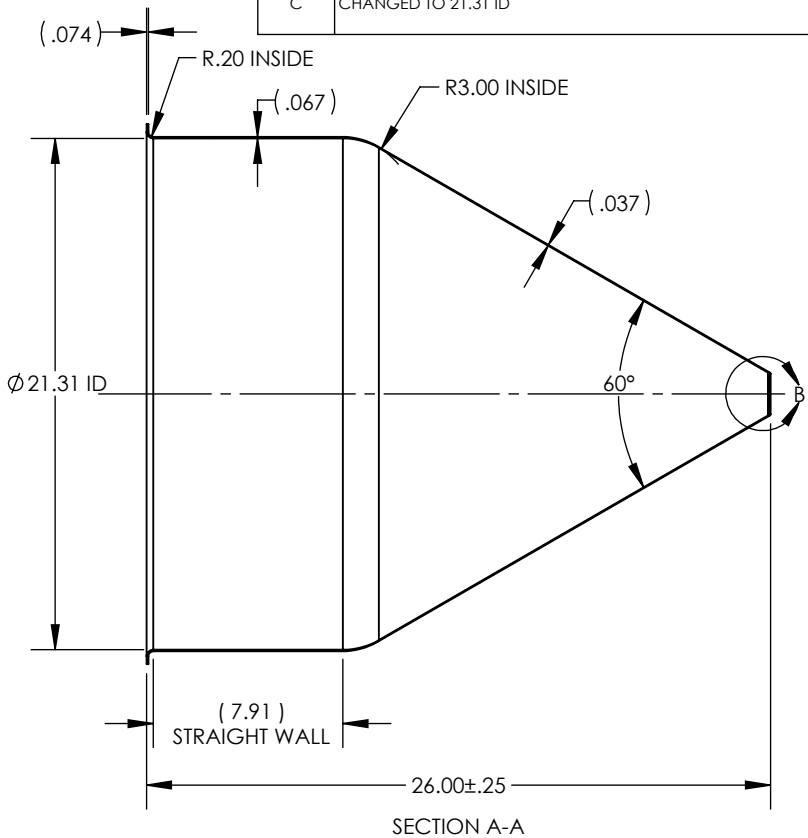


1. PARENT MATERIAL: 304 STAINLESS STEEL, 14 GAUGE (0.075" THICK)
2. FINISH: NO METAL FINISHING REQUIRED. THE FINAL FINISH SHALL BE THE RESULT OF THE PROCESSES USED TO FABRICATE THE SHAPE, RESULTING IN AN ESTIMATED SURFACE ROUGHNESS OF 80 R_a.
3. ESTIMATED INTERNAL VOLUME: 23.07 GALLONS (5329.22 INCH³)

A

ISOMETRIC VIEW
SCALE 1 : 20



UNLESS OTHERWISE SPECIFIED: 1. DO NOT SCALE DRAWING 2. DIMENSIONS ARE IN INCHES 3. TOLERANCE: FRACTIONAL ± .25 X.X ±.1 X.XX ±.03 X.XXX ±.010 ANGULAR: ±2 DEG. 4. INTERPRET DRAWING PER ASME-Y14.5M-1994 STANDARDS 5. THIRD ANGLE PROJECTION 6. REMOVE BURRS & BREAK ALL SHARP EDGES WITH R0.03 ±.02		NAME	DATE	TITLE: 22" HOPPER WITH 8" STRAIGHT WALL		
	DRAWN	J.KNAPP	15DEC2000			
		J. ASHBY	20FEB2023			
	<u>PROPRIETARY AND CONFIDENTIAL</u>			SIZE A	DRAWING NUMBER TMS221014	REV C
THE INFORMATION CONTAINED WITHIN THIS DRAWING IS THE SOLE PROPERTY OF TOLEDO METAL SPINNING COMPANY. ANY REPRODUCTION IN PART OR AS A WHOLE WITHOUT WRITTEN PERMISSION OF TOLEDO METAL SPINNING COMPANY IS PROHIBITED.						
				SCALE: 1:8	WEIGHT: 19.91	SHEET 1 OF 1